

NELLE PAGINE SEGUENTI:

IN THE FOLLOWING PAGES:

SU RICHIESTA POSSIAMO FORNIRE ALTRI PRODOTTI NON ILLUSTRATI NEL CATALOGO

*PLEASE BE AWARE THAT UPON REQUEST, WE PROVIDE PRODUCTS NOT INCLUDED
IN OUR CATALOGUE*

ASPIRAZIONE

ASPIRATION

CONDIZIONAMENTO

CONDITIONING

VENTILAZIONE

VENTILATION

VENTILAZIONE 12/24 VOLT

12/24 VOLT VENTILATION

**TUTTE LE CARATTERISTICHE TECNICHE RIPORTARE IN QUESTO CATALOGO SONO STATE FORNITE
DALLE CASE COSTRUTTRICI E SONO SUSCETTIBILI DI VARIAZIONI SENZA ALCUN PREAVVISO**

*ALL THE TECHNICAL SPECIFICATIONS SHOWN IN THE CATALOGUE HAVE BEEN PROVIDED
BY THE MANUFACTURERS AND ARE SUBJECT TO CHANGE WITHOUT NOTICE.*

MOTORI PER MULINI

GRINDERS MOTORS



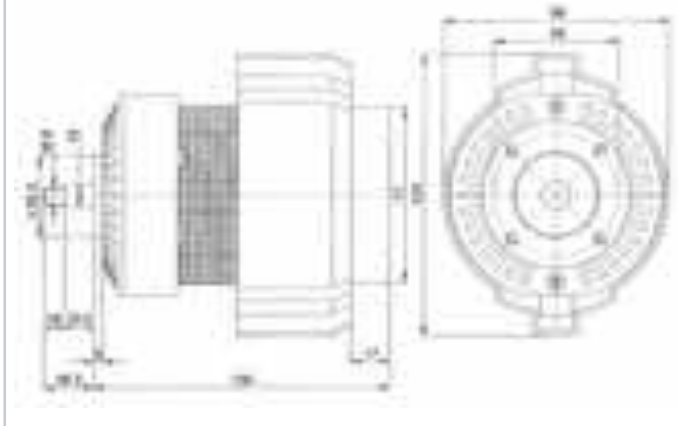
CARATTERISTICHE TECNICHE:

Motore: 230V 50 Hz.
 Albero: Ø 10 mm x 32 mm di lunghezza.
 Filetto: 8 MA.
 Esecuzione standard con due cuscinetti a sfere.

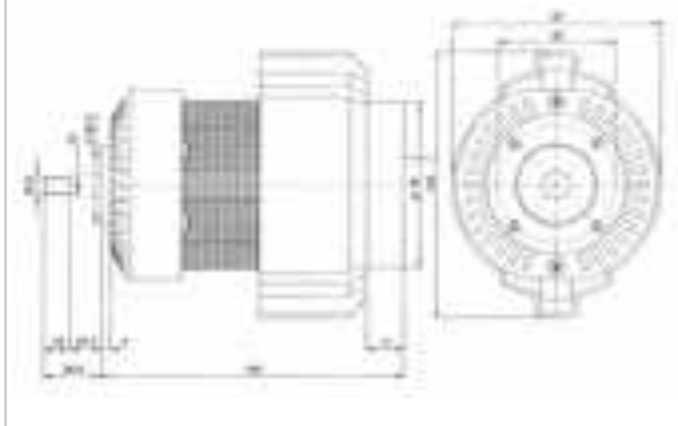
TECHNICAL CHARACTERISTICS:

Motor: 230V 50 Hz.
 Shaft: Ø 10 mm x 32 mm length.
 Thread: 8 MA.
 Performance standard with two ball bearings.

MM 0800



MM 1200



Articolo Art.	Watt ass. Abs. watt	Watt resi Watt given	N. giri min a carico N° turns load	N. giri min a vuoto N° turns empty
MM.0800	800	570	9800	22500
MM.1200	1200	875	10000	22000

MOTORI PER ASPIRAPOLVERE - ASPIRALIQUIDI BY-PASS

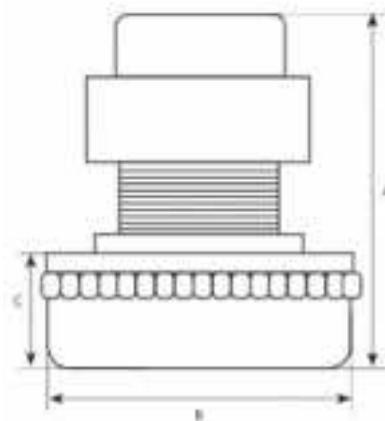
BY-PASS MOTORS FOR VACUUM-CLEANERS AND LIQUID ASPIRATORS

CARATTERISTICHE TECNICHE:

Esecuzione con due cuscinetti a sfere.
 Due impedenze antidisturbo radio.
 Classe di isolamento B Grado II.
 Motore monofase 230V 50/60 Hz
 Costruzione conforme alle norme CE.

TECHNICAL CHARACTERISTICS:

Execution with two ball bearings.
 Two radio antijamming impedances.
 Insulation class B Degree II.
 230V 50/60 Hz single-phase motor.
 CE norms.



Articolo Art.	Potenza max W Max power W	A	Ø B	C	Stadi Stages
ASP. 910	1000	168	144	69	2
ASP. 911	1200	176	144	69	2
ASP. 610	1000	168	144	66.5	2
ASP. 611	1200	176	144	66.5	2



Articolo Art.	Potenza max W Max power W	A	Ø B	C	Stadi Stages
ASP. 502	1000	168	144	69	2
ASP. 504	1200	170	144	69	2



Articolo Art.	Potenza max W Max power W	A	Ø B	C	Stadi Stages
ASP. 612	1200	203	144	92.5	3
ASP. 613	1500	205	144	92.5	3

MOTORE PER ASPIRAPOLVERE - ASPIRALIQUIDI BY-PASS

MOTOR FOR VACUUM-CLEANERS AND BY-PASS LIQUID ASPIRATORS



IN ESAURIMENTO
RUNNING OUT

Articolo Art.	Potenza max W Max power W	A	Ø B	C	Stadi Stages
ASP. 700	1320	240	190	55	3

MOTORI PER ASPIRAZIONE CENTRALIZZATA

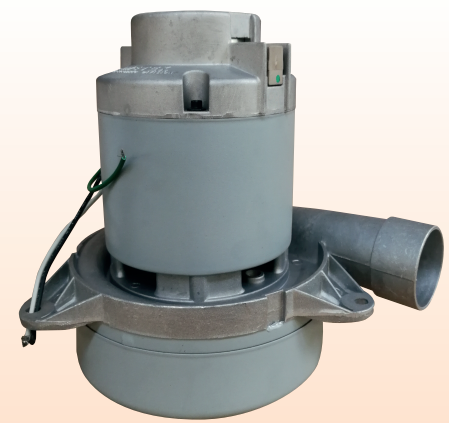
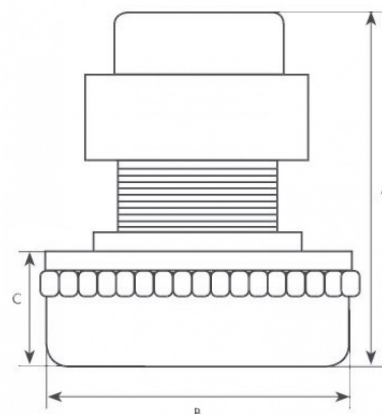
CENTRALIZED VACUUM MOTORS

CARATTERISTICHE TECNICHE:

Esecuzione con due cuscinetti a sfere.
Due impedenze antidisturbo radio.
Classe d'isolamento B Grado II.
Motore monofase 230V 50/60 Hz.
Costruzione conforme alle norme CE.

TECHNICAL CHARACTERISTICS:

Execution with two ball bearings.
Two radio antijamming impedances.
Insulation class B Degree II.
230V 50/60 Hz single-phase motor.
CE norms.



Articolo Art.	Potenza max W Max power W	A	Ø B	C	Stadi Stages
ASP. 600	1470	201	182	63	2



Articolo Art.	Potenza max W Max power W	A	Ø B	C	Stadi Stages
ASP. 599	1475	224	182	75	3

MOTORI PER ASPIRAPOLVERE - ASPIRALIQUIDI BY-PASS

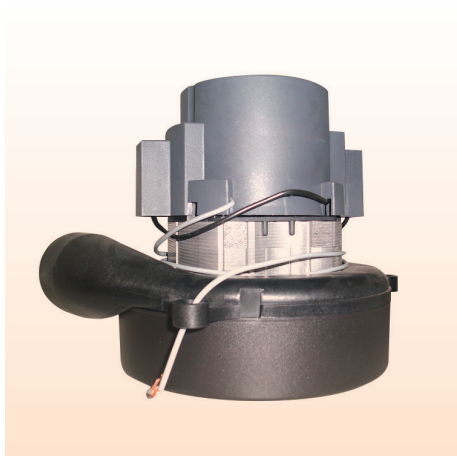
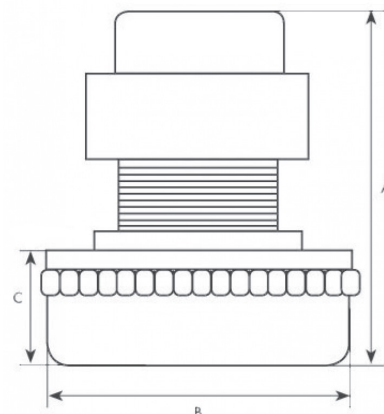
MOTORS FOR VACUUM-CLEANERS AND BY-PASS LIQUID ASPIRATORS

CARATTERISTICHE TECNICHE:

Esecuzione con due cuscinetti a sfere.
 Due impedenze antidisturbo radio.
 Classe d'isolamento B Grado II.
 Motore monofase 230V 50/60 Hz.
 Costruzione conforme alle norme CE.

TECHNICAL CHARACTERISTICS:

Execution with two ball bearings.
 Two radio antijamming impedances.
 Insulation class B Degree II.
 230V 50/60 Hz single-phase motor.
 CE norms.



Articolo Art.	Potenza max W Max power W	A	Ø B	C	Stadi Stages
ASP. 601	1000	138	144	30	1



Articolo Art.	Potenza max W Max power W	A	Ø B	C	Stadi Stages
ASP. 602	1200	177	144	76.5	2



Articolo Art.	Potenza max W Max power W	A	Ø B	C	Stadi Stages
ASP. 603	1380	200	144	100	3

MOTORI PER ASPIRAPOLVERE - ASPIRALIQUIDI BY-PASS

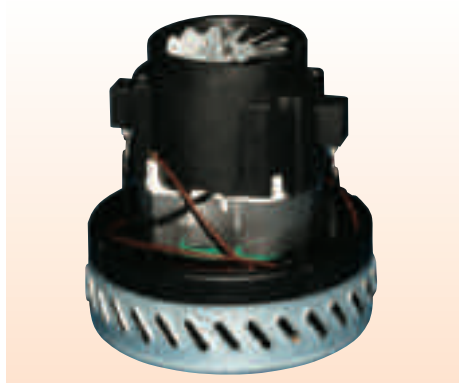
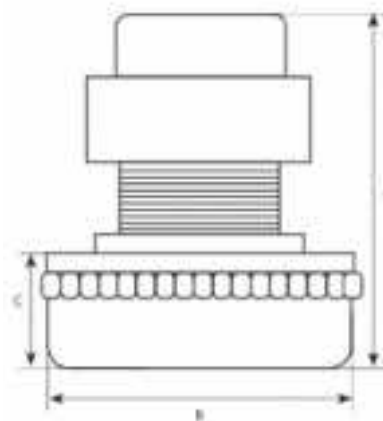
MOTORS FOR VACUUM-CLEANERS AND BY-PASS LIQUID ASPIRATORS

CARATTERISTICHE TECNICHE:

Esecuzione con due cuscinetti a sfere.
 Due impedenze antidisturbo radio.
 Classe d'isolamento B Grado II.
 Motore monofase 230V 50/60 Hz.
 Costruzione conforme alle norme CE.

TECHNICAL CHARACTERISTICS:

Execution with two ball bearings.
 Two radio antijamming impedances.
 Insulation class B Degree II.
 230V 50/60 Hz single-phase motor.
 CE norms.



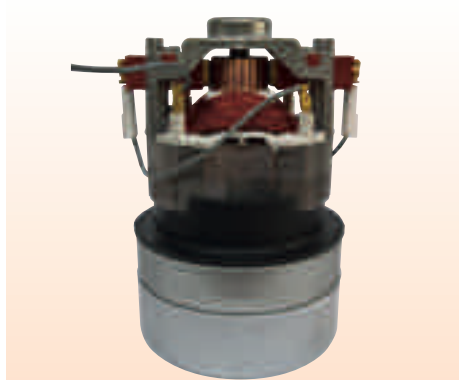
Articolo Art.	Potenza max W Max power W	A	Ø B	C	Stadi Stages
ASP. 500	1000	136	144	48	1



Articolo Art.	Potenza max W Max power W	A	Ø B	C	Stadi Stages
ASP. 500.1	1150	140	144	50	1



Articolo Art.	Potenza max W Max power W	A	Ø B	C	Stadi Stages
ASP. 306	800	175	106	48.5	2



Articolo Art.	Potenza max W Max power W	A	Ø B	C	Stadi Stages
ASP. 307	800	161	106	61	2

MOTORI PER ASPIRAPOLVERE

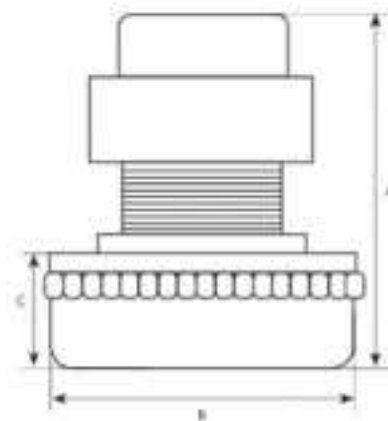
MOTORS FOR VACUUM-CLEANERS

CARATTERISTICHE TECNICHE:

Esecuzione con due cuscinetti a sfere.
 Due impedenze antidisturbo radio.
 Classe d'isolamento B Grado II.
 Motore monofase 230V 50/60 Hz.
 Costruzione conforme alle norme CE.

TECHNICAL CHARACTERISTICS:

Execution with two ball bearings.
 Two radio antijamming impedances.
 Insulation class B Degree II.
 230V 50/60 Hz single-phase motor.
 CE norms.



Articolo Art.	Potenza max W Max power W	A	Ø B	C	Stadi Stages
ASP. 312	1100	131	144	40	1



Articolo Art.	Potenza max W Max power W	A	Ø B	C	Stadi Stages
ASP. 309	800	157	144	66.5	2
ASP. 311	900	165	144	66.5	2



NOVITÀ
NEW

Articolo Art.	Potenza max W Max power W	A	Ø B	C	Stadi Stages
ASP. 313	1300	190	144	92	3



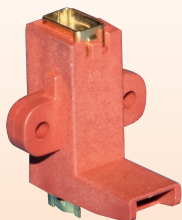
Articolo Art.	Potenza max W Max power W	A	Ø B	C	Stadi Stages
ASP. 308	1000	156	144	66.5	2
ASP. 310	1300	162	144	66.5	2

RICAMBI PER MOTORI ASPIRAPOLVERE/ASPIRALIQUIDI

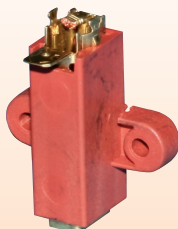
SPARES FOR MOTORS VACUUM-CLEANERS AND LIQUID ASPIRATORS

Completi di spazzole / With brushes

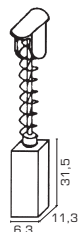
art. **PS.50**



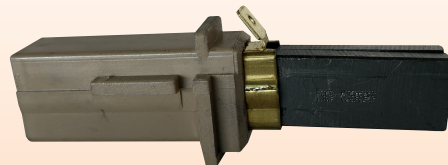
art. **PS.55**



art. **3301**

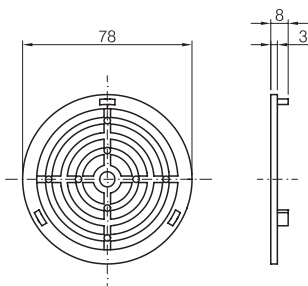


art. **PS.70**
per/for
ASP. 599/600



NOVITÀ
NEW

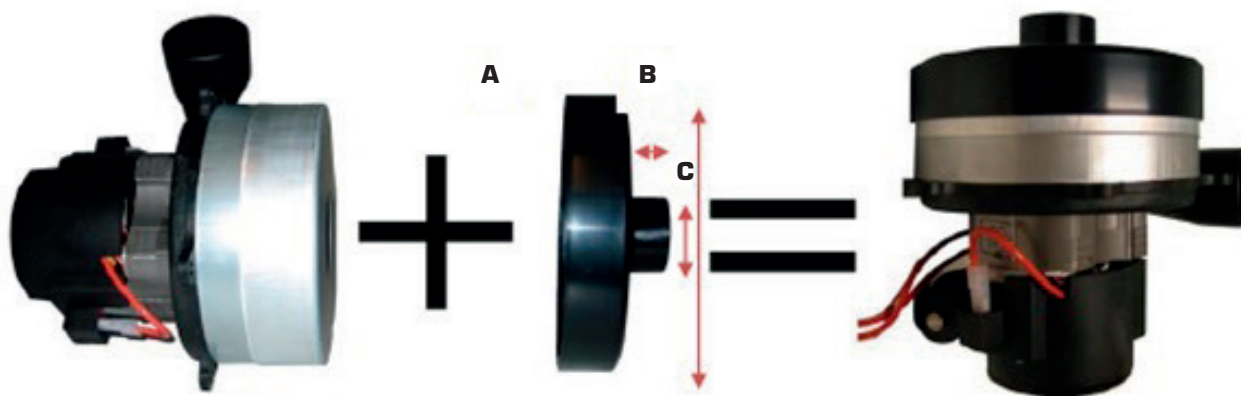
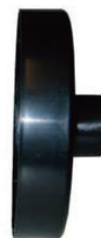
art. **GR.80**



art. **G.300**



art. **HAKO**



Motore Aspirazione
Suction Motor



Adattatore invito Asp.
Inlet Adaptor



Motore con invito Asp.
Suction Motor with inlet

A	= Ø Interno	: 145 mm	Inner Ø
B	= H invito tubo	: 25 mm	Height inlet tube mm
C	= Ø esterno	: 40 mm	Extern Ø

MOTORI DIRETTI

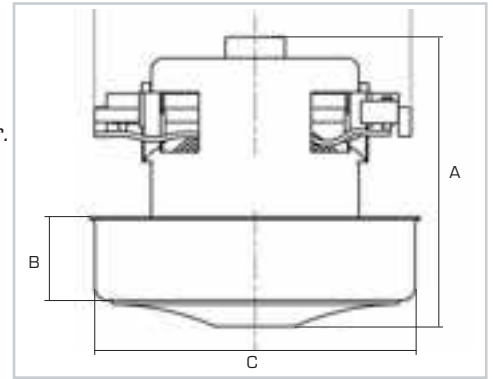
THROUGH FLOW MOTORS

CARATTERISTICHE TECNICHE:

Esecuzione con due cuscinetti a sfere.
 Due impedenze antidisturbo radio.
 Classe d'isolamento B Grado II.
 Motore monofase 230V 50/60 Hz.
 Costruzione conforme alle norme CE.

TECHNICAL CHARACTERISTICS:

Execution with two ball bearings.
 Two radio antijamming impedances.
 Insulation class B Degree II.
 230V 50/60 Hz single-phase motor.
 CE norms.



NOVITÀ
NEW

Articolo Art.	Potenza max W Max power W	A	B	C	Stadi Stages
ASP. 314	1000	132	45	129/136	1
ASP. 314 L KARKER - HILTI	1200	136	46	143/149	1



Articolo Art.	Potenza max W Max power W	A	B	C	Stadi Stages
ASP. 315	1000	121	45	132	1
ASP. 315 L	1400	122	45	139	1



Articolo Art.	Potenza max W Max power W	A	B	C	Stadi Stages
ASP. 316	1200	125	45	130	1



NOVITÀ
NEW

Articolo Art.	Potenza max W Max power W	A	B	C	Stadi Stages
ASP. 318	1400	114	44	130	1

MOTORI ADATTABILI VORWERK FOLLETTO

ADAPTABLE MOTOR VORWERK FOLLETTO

NOVITÀ
NEW



Art. ASP. 120

Motore adattabile per modello VK 120-121-122
Adaptable motor for model VK 120-121-122



Art. ASP. 116

Motore adattabile per modello VK 116-117
Adaptable motor for model VK 116-117



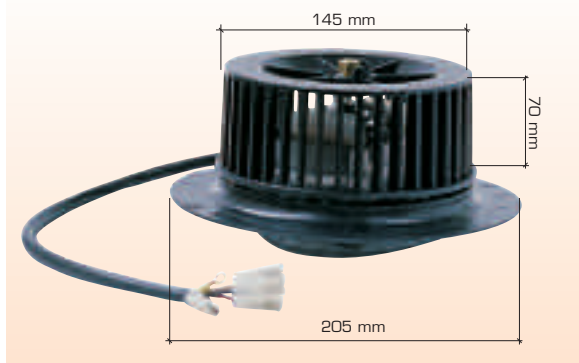
Art ASP. 135

Motore adattabile per modello VK 135-136- Kobold 135
Adaptable motor for model VK 135-136 Kobold 135

MOTORI PER CAPPE DI ASPIRAZIONE

MOTORS FOR EXTRACTION HOODS

art. **MCA.156N**

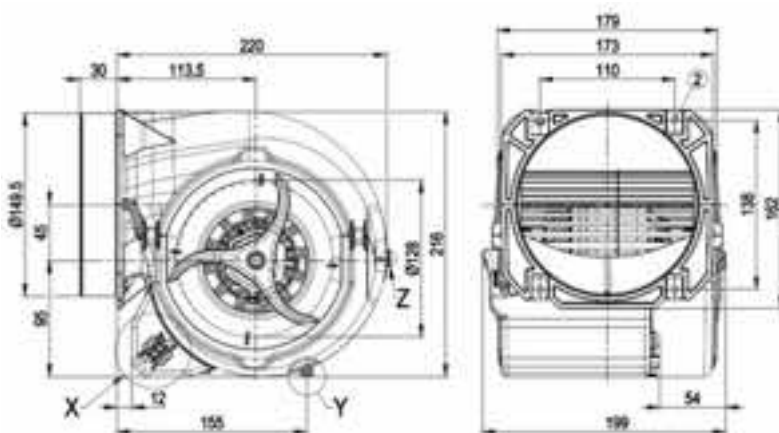


Modello completo di supporto e ventola.
 Con protettore termico - 2 poli schermati - 3 velocità.
 2800 giri.

Model complete with stand and fan.
 With thermal cutout - 2 shielded poles - 3 speed.
 2800 rpm.

art. **MCA.01**

NOVITÀ
NEW



CARATTERISTICHE GENERALI

Ventilatore centrifugo a doppia aspirazione adatto per applicazioni dove sono richieste alte prevalenze e bassa rumorosità.

GENERAL CHARACTERISTICS

Centrifugal fan double inlet, suitable for applications where are required prevalences high and low noise.

Impiego

Cappe da cucina industriali, estrazione di fumi max 50°C con condotti per alte prevalenze.

Use

Hoods industrial kitchen extraction of smoke 50°C with duct for high prevalences.

Articolo Art.	Volt	HZ	MC/H Air flow	Giri Rpm	W IN Power IN	Ampere Amps	µF µF	dB
MCA.01	230	50-60	630	1600	290/320	1.28/1.4	6	73/60

MOTORI DI RICAMBIO PER VENTILATORI NICOTRA

SPARE MOTORS FOR NICOTRA BLOWERS

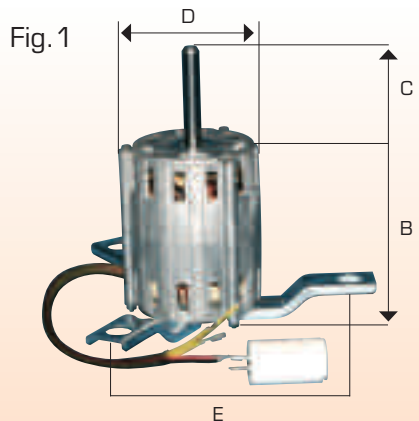
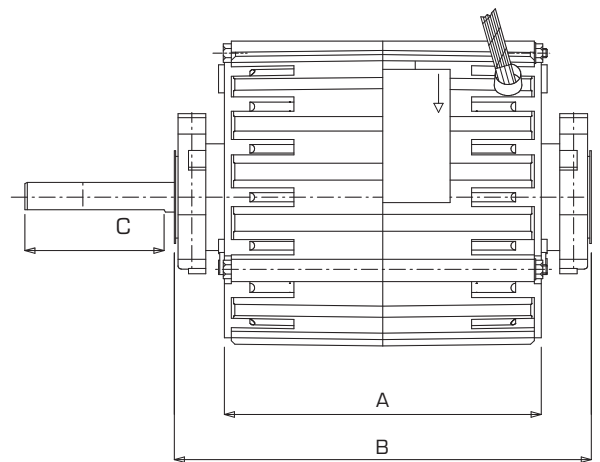
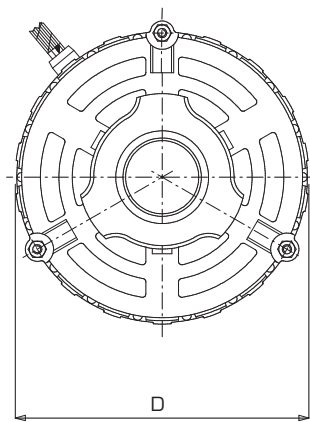
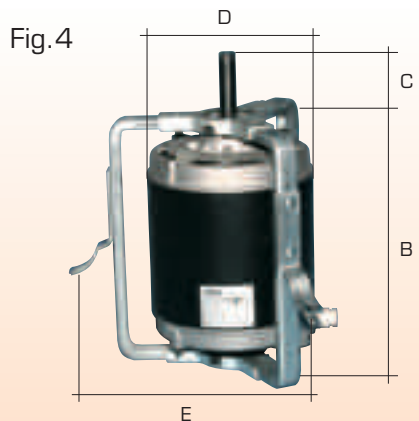


Fig.3



Motore a 1 velocità / 1 speed motor

Articolo Art.	Codice Code	Modello Model	N. Poli N. Poles	Potenza Watt resi Power Watt given	A	B	C	D	E	Figura Figure
TRM.701.2	C003105	DD7/7	6 Mon	62	-	113	70	92	100	1
TRM.702.2	C001501	DD7/7	4 Mon	147	-	120	70	116	190	1
TRM.703.2	11000700	DD9/7 - 9/9	6 Mon	147	113	155	75	129	-	3
TRM.704.2	11007500	DD9/7 - 9/9	4 Mon	300	128	170	70	127	-	3
TRM.705.2	11011011	DD9/9 - 10/8 - 10/10	6 Mon	245	128	171	70	129	-	3
TRM.706.2	11010503	DD10/8 - 10/10	4 Mon	373	137	180	50	127	-	3
TRM.707	RM297Z	DD12 - 9	6 Trif	1100	-	241	60	147	295	4

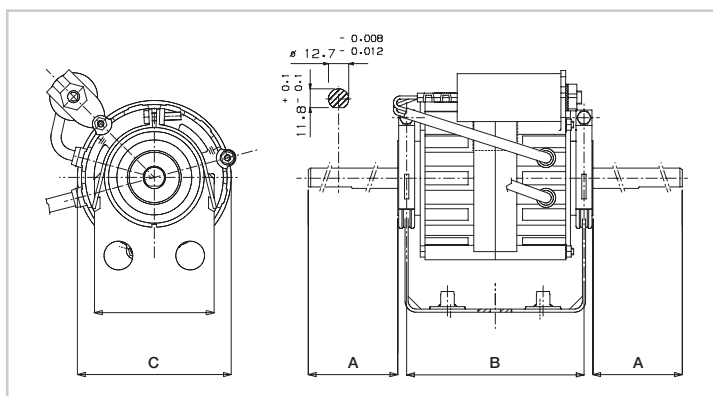
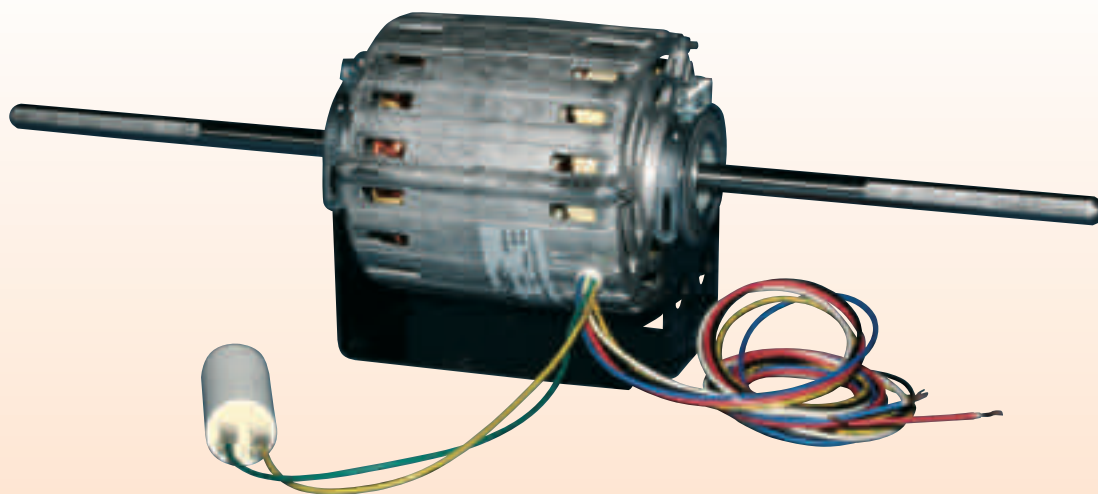
Motore a 3 velocità / 3 speed motor

Articolo Art.	Codice Code	Modello Model	N. Poli N. Poles	Potenza Watt resi Power Watt given	A	B	C	D	E	Figura Figure
TRM.901.2	11015300	DD7/7	4 Mon	147	104	-	93	129	220	1
TRM.902.2	11006301	DD7/7 - 9/7	6 Mon	147	113	141	70	129	220	1
TRM.903.2	11006333	DD9/9	6 Mon	147	113	156	68	127	-	3
TRM.904.2	11006200	DD9/9	6 Mon	245	128	171	69	129	-	3
TRM.906.2	11021408	DD9/9	6 Mon	420	137	180	65	153	-	3
TRM.905.2	11006213	DD10/8 - 10/10	6 Mon	245	130	173	60	146	-	3

Mon = Monofase / Single-phase Trif = Trifase / Three-phase

MOTORI MONOFASE PER VENTILCONVETTORI

SINGLE-PHASE MOTORS FOR FAN COILS



Motori 4 POLI - 3 velocita' / 4 POLES - 3 Speed motors

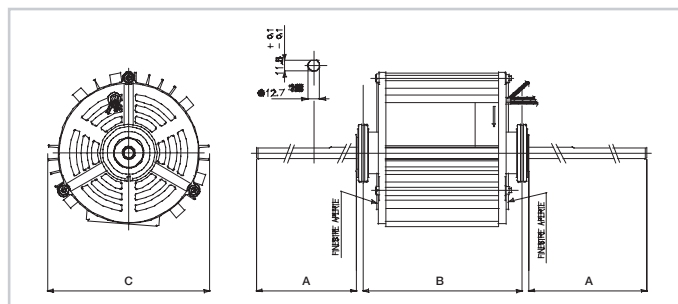
Articolo Art.	Modello Model	N° Alberi No. Shafts	Watt Resi Watt given	Esecuzione Model	A	B	C	Rotazione Rotation
TRM.201	11031.03	1	10	Chiuso / Enclosed	178.7	111.2	129	SX
TRM.173	CO.143.00	2	13	Chiuso / Enclosed	164	111.2	96.4	-
TRM.174	CO.144.00	2	20	Chiuso / Enclosed	199	111.2	96.4	-
TRM.301	110097.06	1	40	Chiuso / Enclosed	178.7	111.2	129	SX
TRM.202	110097.02	2	40	Chiuso / Enclosed	199	111.2	129	-
TRM.175	CO.142.00	2	42	Chiuso / Enclosed	199	111.2	96.4	-
TRM.176	CO.100.01	1	60	Chiuso / Enclosed	135.2	111.2	95	DX
TRM.401	110049.21	1	73	Chiuso / Enclosed	200.4	111.2	129	DX
TRM.302	110049.12	2	73	Chiuso / Enclosed	199	111.2	129	-
TRM.177	CO.101.01	1	75	Chiuso / Enclosed	135.2	111.2	95	DX
TRM.178	110483.01	1	88	Chiuso / Enclosed	173.8	111.2	129	DX
TRM.179	110480.01	2	120	Chiuso / Enclosed	223.8	111.2	129	-
TRM.402.4	110153.09	2	147	Chiuso / Enclosed	189.3	130.2	129	-
TRM.180	110481.01	2	170	Chiuso / Enclosed	223.8	111.2	129	-
TRM.502.4	110218.13	2	184	Aperto / Open	191	130	126.7	-
TRM.504	110200.13	2	250	Aperto / Open	210	149	129	-

NOVITÀ
NEW

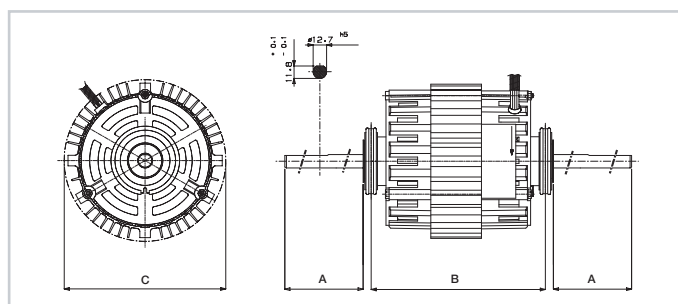
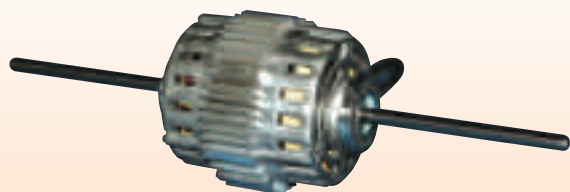
MOTORI MONOFASE PER VENTILCONVETTORI

SINGLE-PHASE MOTORS FOR FAN COILS

TRM.190



TRM.909/910



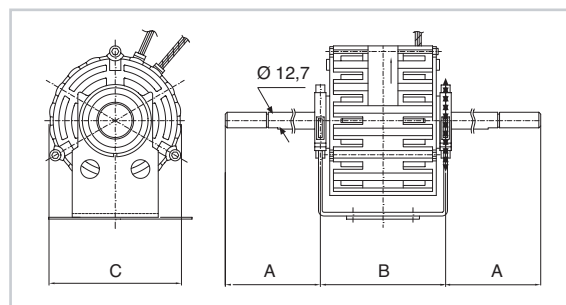
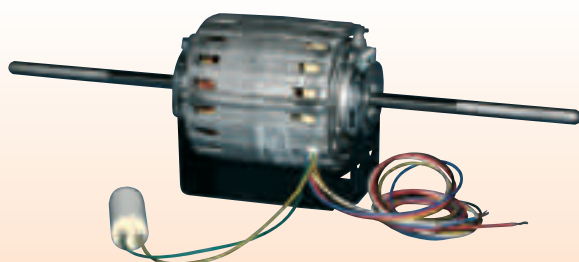
Motori 4 POLI - 3 velocita' / 4 POLES - 3 Speed motors

Articolo Art.	Modello Model	N° Alberi No. Shafts	Watt Resi Watt given	Giri RPM	Esecuzione Model	A	B	C
TRM.909	110214.03	2	420	1400	Aperto / Open	170.9	165	153
TRM.190	B0011.03	2	540	1320	Aperto / Open	204.9	175	178
TRM.910	11034501	2	600	1310	Aperto / Open	170	197	170

NOVITÀ
NEW

N.B. La culla viene fornita solo su richiesta. Prezzo a parte. Articolo culla per motore **TRM.909=CM1** per **TRM.190=CM2** per **TRM.910=CM5**.

N.B. The cradle can be supplied only on request. Aside price list. Cradle for **TRM.909=CM.1**, for **TRM.190=CM.2** for **TRM.910=CM.5**.



Motori 4 POLI - 5 velocita' / 4 POLES - 5 Speed motors

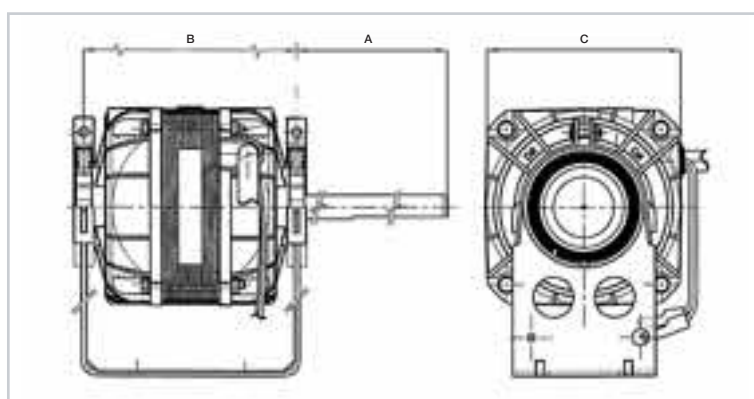
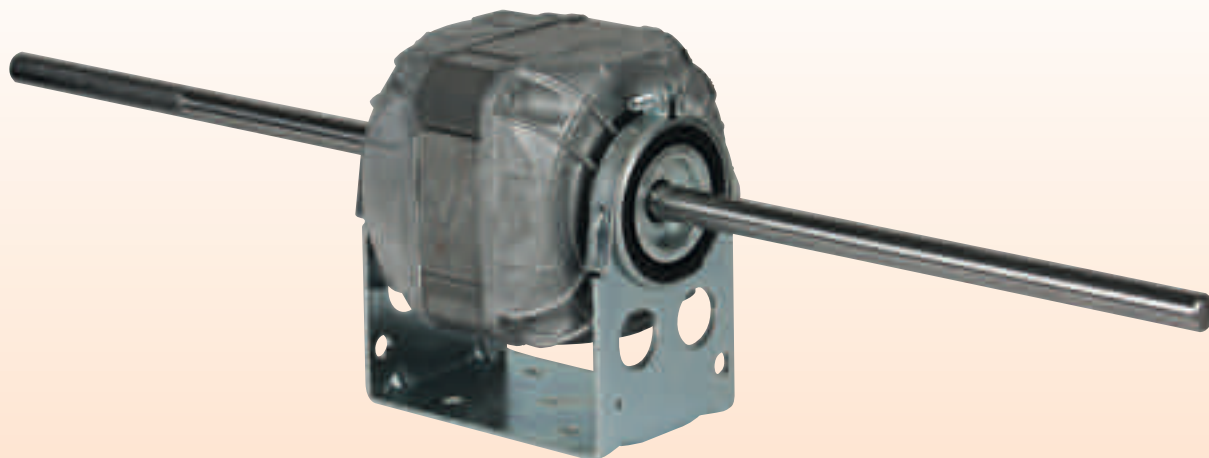
Articolo Art.	Modello Model	N° Alberi No. Shafts	Watt Resi Watt given	Giri RPM	Esecuzione Model	A	B	C	Rotazione Rotation
TRM.172	CO.127.02	1	30	1400	Chiuso / Enclosed	170	118	92.71	SX
TRM.171	CO.126.01	2	40	1400	Chiuso / Enclosed	195.4	118	96.4	-

Motori 6 POLI - 3 velocita' / 6 POLES - 3 Speed motors

Articolo Art.	Modello Model	N° Alberi No. Shafts	Watt Resi Watt given	Giri RPM	Esecuzione Model	A	B	C
TRM.402	110063.23	2	147	900	Chiuso / Enclosed	189.3	130.2	129
TRM.502	110062.19	2	184	900	Aperto / Open	174.6	155.6	129
TRM.602	110062.20	2	245	900	Aperto / Open	174.6	155.6	129

MOTORI MONOFASE PER VENTILCONVETTORI

SINGLE-PHASE MOTORS FOR FAN COILS



Motori 4 POLI - multi velocita' / 4 POLES - Multi speed motors

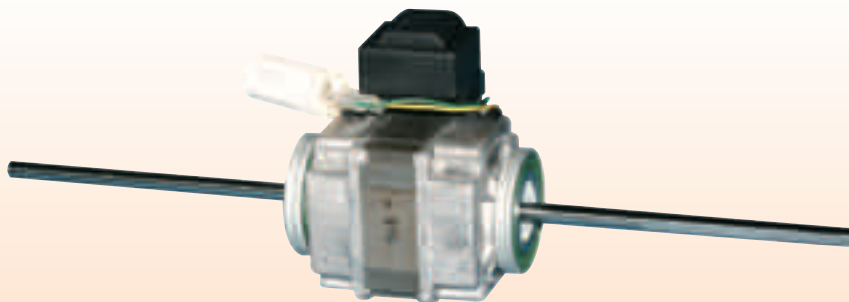
Articolo Art.	Modello Model	N° Alberi No. Shafts	Watt Resi Watt given	N. vel. No. speed	Giri RPM	Esecuzione Model	A	B	C	Rotazione Rotation
TRM.807	103M 2025/1Q	1	23	3	1400	Chiuso / Enclosed	170	111	103x103	DX
TRM.819	103B 2025/3Q	2	23	3	1400	Chiuso / Enclosed	180	115	103x103	-
TRM.808	103B 3050/1Q	2	35	3	1400	Chiuso / Enclosed	210	115	103x103	-
NOVITÀ NEW TRM.840	104B 3060/1Q	2	60	4	1400	Chiuso / Enclosed	224	111	103x103	-
TRM.817	103B 4080/1Q	2	80	3	1400	Aperto / Open	210	135	103x103	-
NOVITÀ NEW TRM.835	106B 5085/1Q	2	85	6	1400	Chiuso / Enclosed	210	131	103x103	-
TRM.820	104B 50110/1Q	2	113	4	1400	Chiuso / Enclosed	190	131	103x103	-
NOVITÀ NEW TRM.830	103B 50185/1Q	2	185	3	1400	Chiuso / Enclosed	205	131	103x103	-

Motore 6 POLI - 3 velocita' / 6 POLES - 3 Speed motor

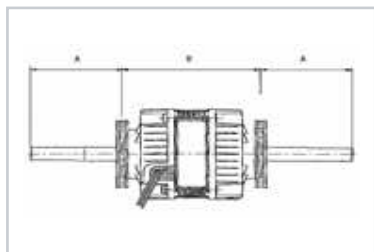
Articolo Art.	Modello Model	N° Alberi No. Shafts	Watt Resi Watt given	Giri RPM	Esecuzione Model	A	B	C
TRM.818	103B 62020/1Q	2	18	900	Aperto / Open	200	115	103x103

MOTORI MONOFASE PER VENTILCONVETTORI

SINGLE-PHASE MOTORS FOR FAN COILS



con albero Ø 9,52 / with shaft Ø 9,52



La culla viene fornita solo su richiesta. Prezzo a parte.
Culla per TRM.125 = Art. CM.3
Culla per TRM.126 = Art. CM.4

The cradle can be supplied only on request. Separate price list.
Cradle for TRM.125 = Art. CM.3
Cradle for TRM.126 = Art. CM.4

Motori 4 POLI - 6 velocità / 4 POLES - 6 speed motors

Articolo Art.	Modello Model	N° Alberi No. Shafts	Watt Resi Watt given	Giri RPM	Esecuzione Model	A	B
TRM.125	A833025/5	2	25	1300	Chiuso / Enclosed	170	115
TRM.126*	83B4040/1	2	40	1100	Chiuso / Enclosed	175	131

* Fornito senza autotrasformatore.

* Supplied without autotransformer.

NOVITÀ
NEW



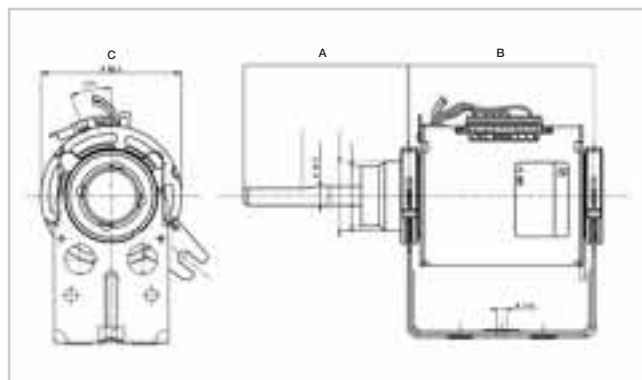
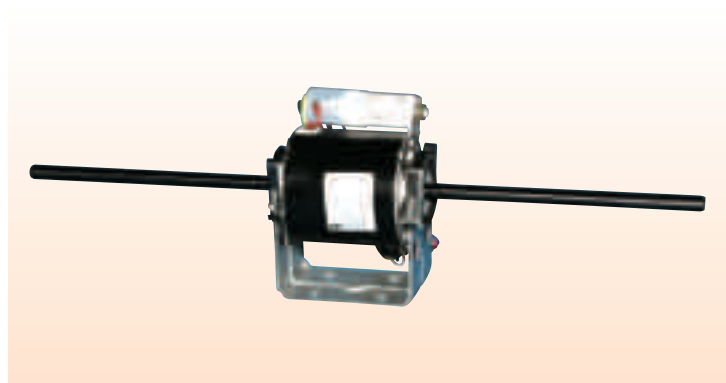
Art. TF.01

Trasformatore per ventilconvettori 6 velocità.
Transformer for fan coils 6 speed.

MOTORI MONOFASE PER VENTILCONVETTORI

SINGLE-PHASE MOTORS FOR FAN COILS

SISME



Motori 4 POLI - 5/7 velocità / 4 POLES - 5/7 speed motors

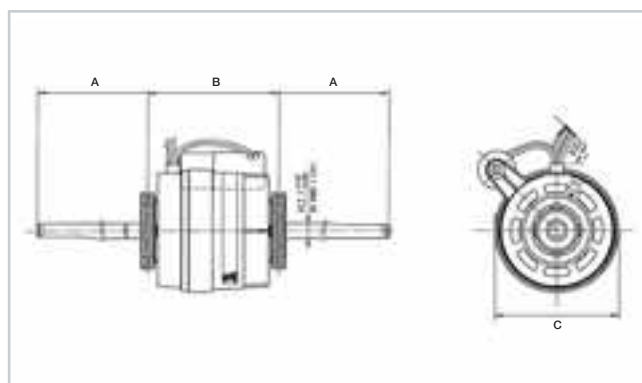
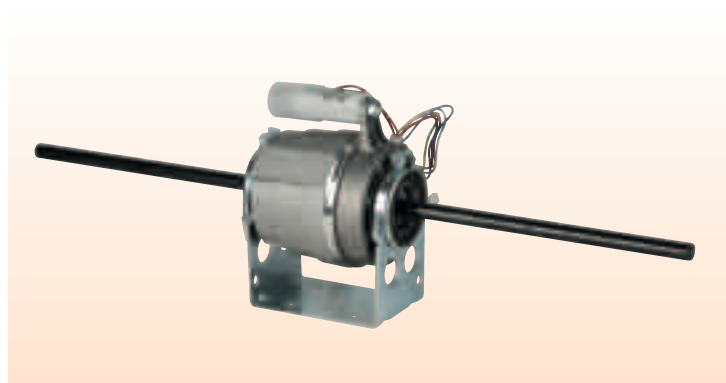
Articolo Art.	Modello Model	N° Alberi No. Shafts	Watt Resi Watt given	N. vel No. Speed	Giri RPM	Esecuzione Model	A	B	C	Rotazione Rotation
TRM.821*	K35410.M01975	1	35	7	1200	Chiuso / Enclosed	175	100	93.4	SX
TRM.823	K48410.M01053	2	47	7	1200	Chiuso / Enclosed	182	125	124.6	-
TRM.813*	K35411.M01344	2	50	5	1400	Chiuso / Enclosed	169.6	111.6	93.4	-
TRM.812*	K35417.M01792	2	60	7	1200	Chiuso / Enclosed	222	126	93.4	-
TRM.824	K48412.M01054	2	74	7	1100	Chiuso / Enclosed	207	125	124.6	-
TRM.825	K48415.M01055	2	120	7	1100	Chiuso / Enclosed	207	125	124.6	-

* **Completi di cavo cablato / Including wired cable**

Motore 4 POLI - 4 velocità / 4 POLES - 4 speed motor

Articolo Art.	Modello Model	N° Alberi No. Shafts	Watt Resi Watt given	Giri RPM	Esecuzione Model	A	B	C	Rotazione Rotation
TRM.822*	K35410.M02128	1	35	1150	Chiuso / Enclosed	180	126	93.4	SX

* **Completi di cavo cablato / Including wired cable**

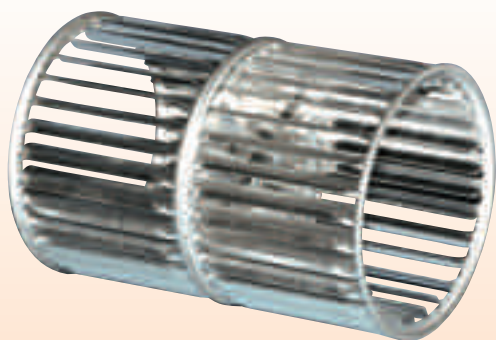


Motori 3 velocità / 3 speed motors

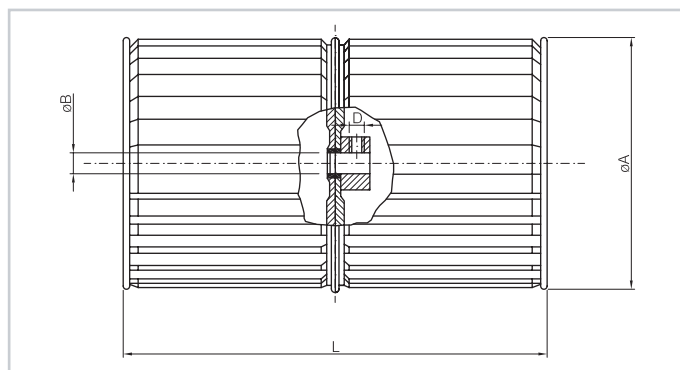
Articolo Art.	Modello Model	Poli Poles	N° Alberi No. Shafts	Watt Resi Watt given	Giri RPM	Esecuzione Model	A	B	C
TRM.814	K35410.M02229	4	2	32	1100	Aperto / Open	224.50	111.8	102
TRM.814.6	K35610.M02228	6	2	18	850	Aperto / Open	224.50	111.8	102

VENTOLE CENTRIFUGHE PER VENTILCONVETTORI

CENTRIFUGAL IMPELLERS FOR FAN COILS



Ricavate da nastro d'alluminio, a doppia aspirazione.
Obtained from aluminium tape with double extraction.



Articolo Art.	ϕA mm.	L mm.	ϕB mm.
V.11	133	148	12.7
V.12	133	176	12.7
V.13	133	196	12.7
V.14	146	148	12.7
V.15	146	176	12.7
V.16	146	196	12.7
V.17	160	176	12.7
V.18	180	240	12.7
V.19	200	196	12.7

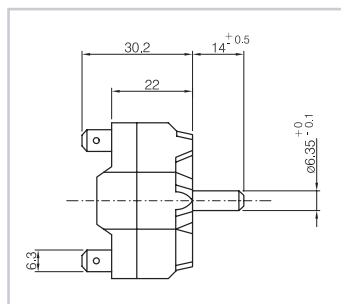
COMMUTATORE DI VELOCITÀ PER VENTILCONVETTORI

SPEED SWITCH FOR FAN COILS

MANOPOLA PER COMMUTATORE DI VELOCITÀ

KNOB FOR SPEED SWITCH

art. **IN.16**



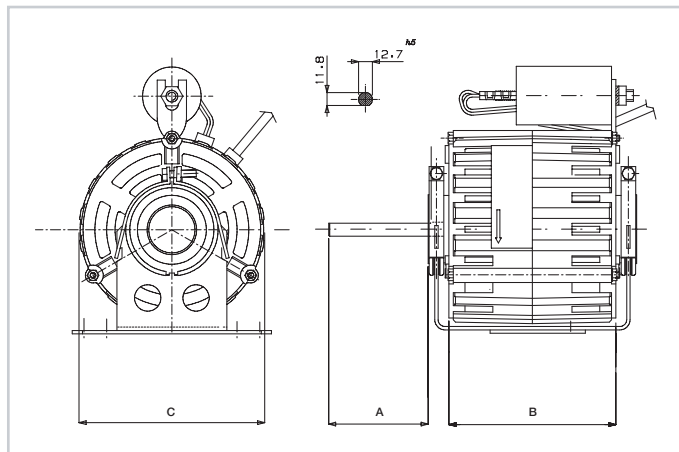
art. **MA.16**



3 Velocità - 16 A - 250 V. Temperatura d'esercizio 180°C.
3 Speed - 16 A - 250 V. Operating temperature 180°C.

MOTORI MONOFASE PER VENTILAZIONE

SINGLE-PHASE VENTILATION MOTORS

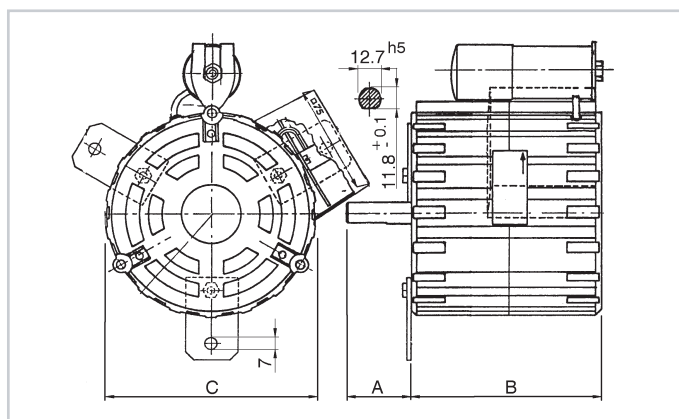


Motori 4 POLI - 1 velocità / 4 POLES - 1 Speed motors

Articolo Art.	Modello Model	N° Alberi No. Shafts	Watt Resi Watt given	Giri RPM	Esecuzione Model	A	B	C	Rotazione Rotation
TRM.204	110024.00	1	105	1350	Chiuso / Enclosed	68	131	129	SX
TRM.205	110081.00	1	147	1350	Chiuso / Enclosed	51	131	129	SX
TRM.206	110105.36	1	368	1350	Aperto / Open	60.9	153.6	129	SX

MOTORI MONOFASE PER GRUPPI EVAPORANTI CONDENSANTI A VENTOLE ELICOIDALI

SINGLE-PHASE MOTOR FOR HELICAL-FAN EVAPORATION CONDENSATION UNITS



Motore 4 POLI - 1 velocità / 4 POLES - 1 Speed motor

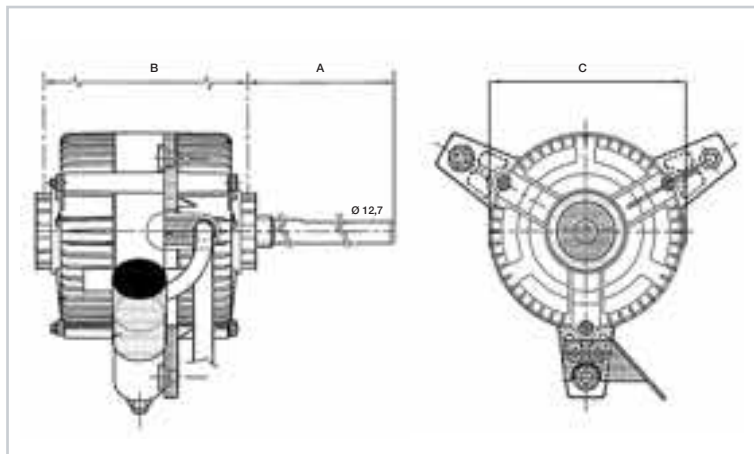
Articolo Art.	Modello Model	N° Alberi No. Shafts	Watt Resi Watt given	Giri RPM	Esecuzione Model	A	B	C	Rotazione Rotation
TRM.241	110024.02	1	92	1350	Chiuso / Enclosed	82	114	126.7	DX

Motore 6 POLI - 1 velocità / 6 POLES - 1 Speed motor

Articolo Art.	Modello Model	N° Alberi No. Shafts	Watt Resi Watt given	Giri RPM	Esecuzione Model	A	B	C	Rotazione Rotation
TRM.243	110351.00	1	147	850	Chiuso / Enclosed	82	114	126.7	DX

MOTORI ELETTRICI PER EVAPORATORI VENTILATI

ELECTRIC MOTORS VENTILATED EVAPORATORS



Motori 4 POLI - 1 velocita' - Monofase / 4 POLES - 1 Speed motors - Single-phase
Senso di rotazione indipendente / Independent rotation direction

Articolo Art.	Modello Model	N° Alberi No. Shafts	Watt Resi Watt given	Giri RPM	Esecuzione Model	A	B	C
TRM.162	101M 40120	1	120	1400	Chiuso / Enclosed	78	141	106
TRM.163	101M 50150	1	150	1400	Chiuso / Enclosed	108	141	106

Motore 4 POLI - 1 velocita' - Trifase / 4 POLES - 1 Speed motors - Three-phase

Articolo Art.	Modello Model	N° Alberi No. Shafts	Watt Resi Watt given	Giri RPM	Esecuzione Model	A	B	C
TRM.165*	101T 40185	1	190	1400	Chiuso / Enclosed	78	141	106

*** IN ESAURIMENTO / RUNNING OUT**

ACCESSORI:
ACCESSORIES:



VENTOLE A PALE RIPORTATE
INSERTED BLADE IMPELLERS

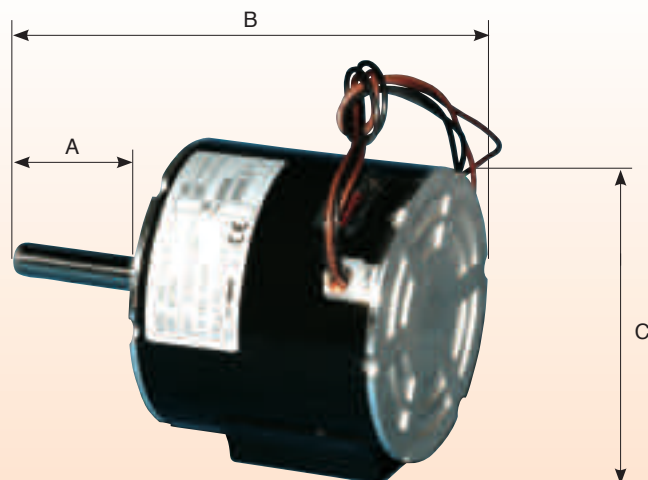
Articolo Art.	Diametro ventola Impeller diameter	Diametro albero Shaft diameter
V.350	350	12.7
V.400	400	12.7

PER AEROTERMI A PARETE
FOR WALL - MOUNTED HEATERS

Articolo Art.	Diametro ventola Impeller diameter	Diametro albero Shaft diameter
VE.400	400	14
VE.450	450	14
VE.500	500	14

MOTORE MONOFASE PER SALDATRICI

SINGLE-PHASE MOTOR FOR WELDERS



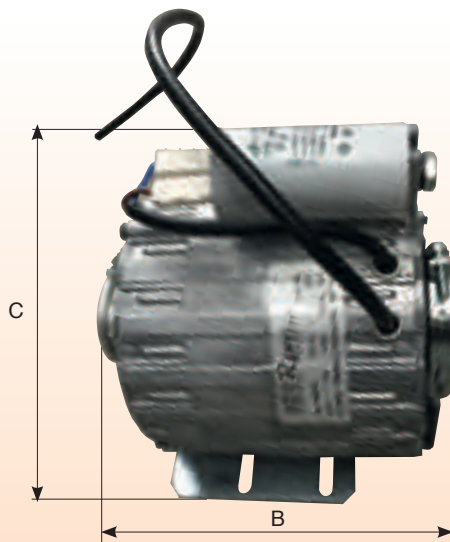
Motore 4 POLI - 1 velocita' / 4-POLES - 1 Speed motor

Articolo Art.	Modello Model	N° Alberi No. Shafts	Watt Resi Watt given	Giri RPM	Esecuzione Model	A	B	C	Rotazione Rotation
TRM.920	3RGM 7030/20	1	70	1400	Chiuso / Enclosed	69.5	163.5	105	SX

MOTORE PER POMPA DI CIRCOLAZIONE

MOTOR CIRCULATION PUMP

Per: distributori di bevande, saldatrici con raffreddamento ad acqua, gruppi refrigeranti.
 For: drinks dispenser, water-cooled welding machines, cooling units.



Motore monofase 4 POLI - 1 velocita' / 4 POLES - 1 speed single-phase motor

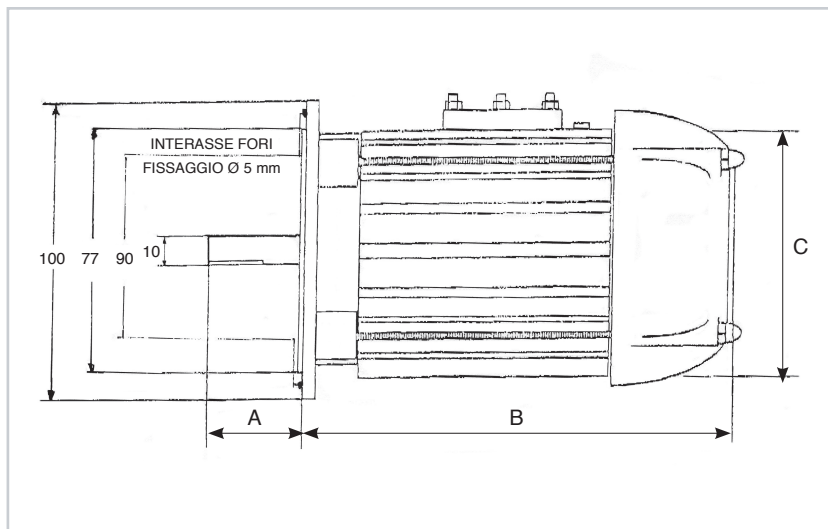
Articolo Art.	Modello Model	Watt Resi Watt given	Giri RPM	Esecuzione Model	B	C
TRM.215	11002703	150	1300	Aperto / Open	174.5	175

MOTORI PER VENTILATORI

FAN MOTORS

MOTORE ELETTRICO TRIFASE TIPO "50". Forma B5. Versione ventilata. Protezione IP44.

ELECTRIC MOTOR THREE-PHASE TYPE "50". Size B5. Ventilated version. IP44 protection.



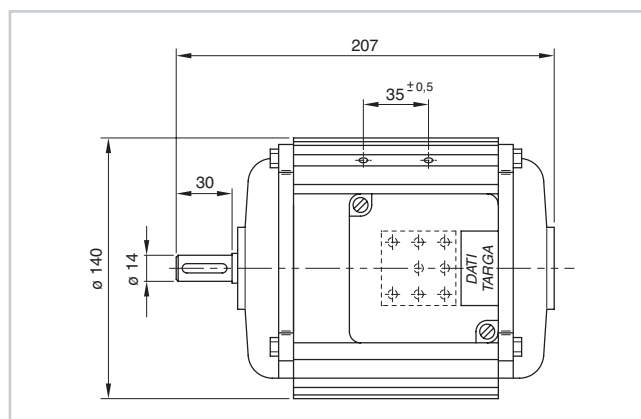
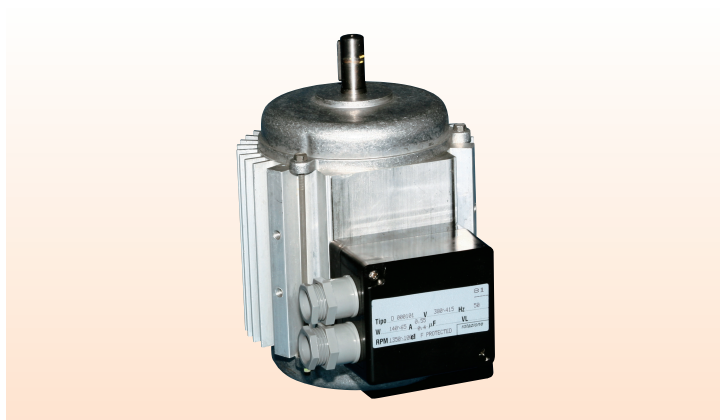
Articolo Art.	Kw	Poli Poles	Giri RPM	A	B	C
TRM.10	0.07	2	2800	30	142	95
TRM.11	0.07	4	1400	60	142	95
TRM.12	0.07	2	2800	60	142	95

MOTORE TRIFASE PER AEROTERMI

THREE-PHASE MOTOR FOR UNIT HEATERS

Motore con cuscinetti dotato di attacco rigido sulla carcassa per un montaggio diretto su griglia autoportante.

Motor featuring bearing with rigid fastening on casing for fitting directly to self-supporting grids.



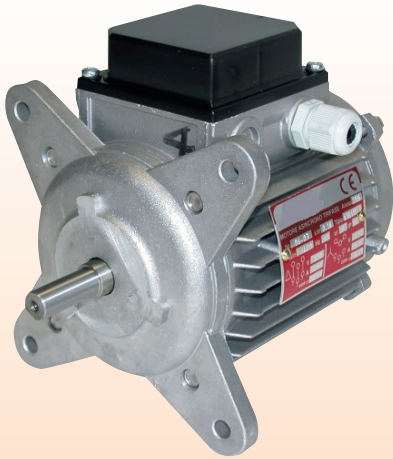
Motore trifase - 2 velocità / Three-phase motor - 2 speed

Articolo Art.	Modello Model	Poli Poles	N° Alberi No. Shafts	Watt Resi Watt given	Giri RPM	Esecuzione Model
TRM.208	DO01	4	1	140	1100/1350	Chiuso/Enclosed

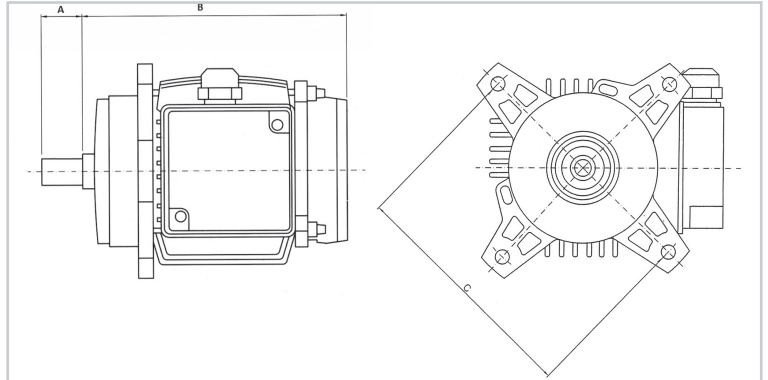
IN ESAURIMENTO / RUNNING OUT

MOTORI TRIFASE PER AEROTERMI A PARETE

THREE-PHASE MOTORS FOR WALL-MOUNTED HEATERS



Intercambiabili con motori di marca SABIANA - IP54 -
Esecuzione: chiuso.
Interchangeable motors with SABIANA brand - IP54 -
Enclosed construction.



Motori trifasi - 1 velocità / Three-phase motors - 1 speed

Articolo Art.	Ø Albero Ø Shaft	Poli Poles	Kw	Giri RPM	A	B	C
TRM.01	12	4	0.18	1400	30	160	155
TRM.02	14	4	0.18	1400	30	160	155
TRM.03	12	6	0.11	900	30	160	155
TRM.04	14	6	0.11	900	30	160	155

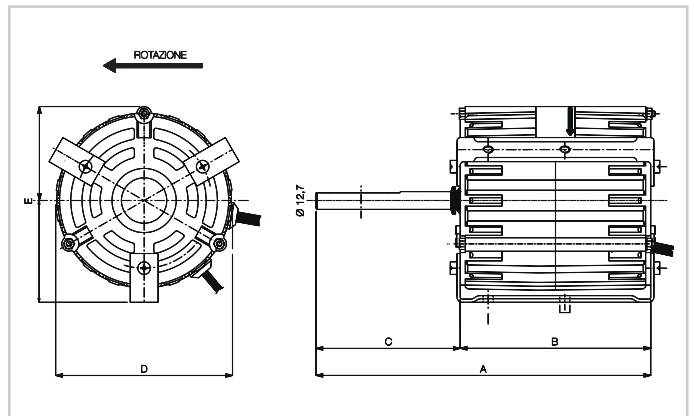
Motori trifasi - 2 velocità / Three-phase motors - 2 speed

Articolo Art.	Ø Albero Ø Shaft	Poli Poles	Kw	Giri RPM	A	B	C
TRM.05	12	4/6	0.12-0.07	1400-900	30	160	155
TRM.06	14	4/6	0.12-0.07	1400-900	30	160	155
TRM.07	12	4/8	0.12-0.05	1400-700	30	160	155
TRM.08	14	4/8	0.12-0.05	1400-700	30	160	155

N.B. Motori 4/6 Poli: avvolgimento unico / N.B. 4/6 poles motors: single winding.

MOTORI PER VENTILATORI CENTRIFUGHI

MOTORS FOR CENTRIFUGAL BLOWERS



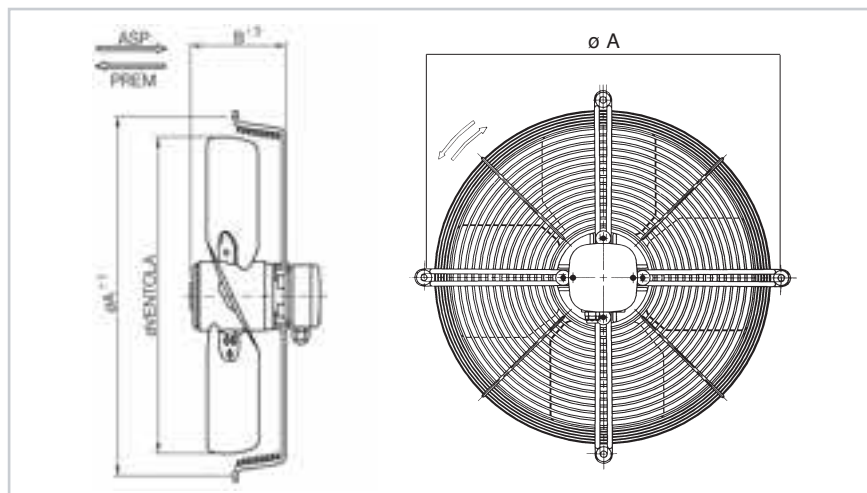
Motori monofasi 6 POLI / Electric single-phase 6 POLES

Articolo Art.	Modello Model	N° Alberi No. Shafts	Watt Resi Watt given	Giri RPM	Esecuzione Model	A	B	C	Ø D	E
TRM.250	E002500	1	187	930	Chiuso / Enclosed	207	136,6	70,4	129	140,35
TRM.260	E002600	1	250	930	Chiuso / Enclosed	207	136,6	103,4	129	140,35

VENTILATORI ASSIALI A ROTORE ESTERNO COMPLETI DI GRIGLIE

AXIAL BLOWERS WITH EXTERNAL ROTOR AND GRILLES

**EBM
ZIEHL**



Articolo Art.	Potenza max W Max power W	Volt	Ø Ventola Ø Impeller	Ø A	B	m ³ h in aria libera m ³ h in free air	N. Poli No. Poles	dB (A)	Accessorio Griglia Accessory grille
VLG.713	43	230/400	170 A	-	62	540	2	59	-
VLG.714	43	230/400	170 P	-	62	540	2	59	-
VLG.715	50	230	170 A	-	62	500	2	62	-
VLG.716	50	230	170 P	-	62	500	2	62	-
VLG.717	50	230	200 A	260	73	740	2	65	200.1
VLG.718	50	230	200 P	260	73	740	2	65	200.1
VLG.719	53	230/400	200 A	260	73	830	2	53	200.1
VLG.720	53	230/400	200 P	260	73	830	2	53	200.1
VLG.741	110	230/400	250 A	300	83	1685	2	72	250.1
VLG.742	110	230/400	250 P	300	83	1685	2	72	250.1

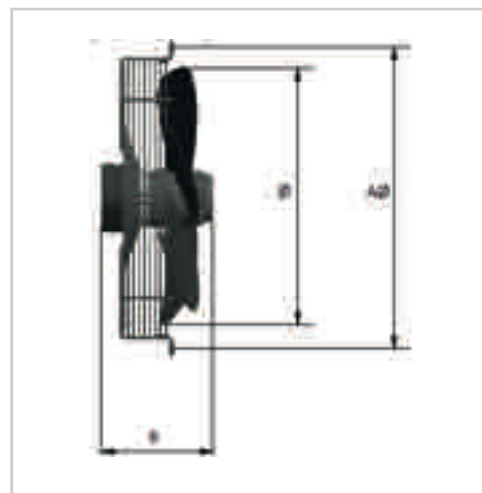
Articolo Art.	Potenza max W Max power W	Volt	Ø Ventola Ø Impeller	Ø A	B	m ³ h in aria libera m ³ h in free air	N. Poli No. Poles	dB (A)	Accessorio Griglia Accessory grille
VLG.721	115	230	250 A	300	83	1610	2	72	250.1
VLG.722	115	230	250 P	300	83	1610	2	72	250.1
VLG.723	30	230	250 A	300	72	910	4	56	250.1
VLG.724	30	230	250 P	300	72	910	4	56	250.1
VLG.725	85	230	300 A	360	83	1690	4	65	300.1
VLG.726	85	230	300 P	360	83	1690	4	65	300.1
VLG.727	85	230/400	300 A	360	83	1740	4	66	300.1
VLG.728	85	230/400	300 P	360	83	1740	4	66	300.1
VLG.729	140	230	350 A	422	102	2850	4	68	350.1
VLG.730	140	230	350 P	422	102	2850	4	68	350.1
VLG.731	145	230/400	350 A	422	102	2900	4	69	350.1
VLG.732	145	230/400	350 P	422	102	2900	4	69	350.1
VLG.743	150	230	400 A	470	102	3660	4	70	400.1
VLG.744	135	230	400 P	470	102	3975	4	70	400.1
VLG.733	150	230/400	400 A	470	102	3800	4	70	400.1
VLG.734	145	230/400	400 P	470	102	4150	4	67	400.1
NOVITÀ VLG.739	245	230	450 A	522	98	5800	4	73	450.1
NOVITÀ VLG.740	245	230	450 P	522	98	5800	4	73	450.1
VLG.735	450	380	450 A	522	141	6200	4	79	450.1
VLG.736	450	380	450 P	522	141	6200	4	79	450.1
VLG.737	240	380	500 A	565	161	5700	6	69	500.1
VLG.738	240	380	500 P	565	161	5700	6	69	500.1
VLG.745	520	220	630 A	750	161	9700	6	76	-
VLG.746	930	380	630 A	750	161	10800	6	78	-

A = Aspirante / In P = Premente / Out

Su richiesta è possibile fornire serie FC e FE ZIEHL.
Series FC and FE ZIEHL available on request.

VENTILATORI ASSIALI A ROTORE ESTERNO COMPLETI DI GRIGLIE

AXIAL BLOWERS WITH EXTERNAL ROTOR AND GRILLES



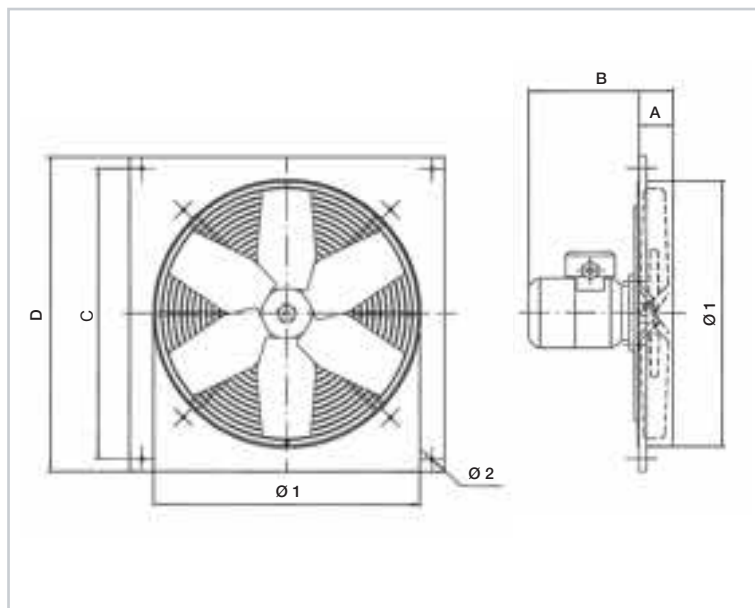
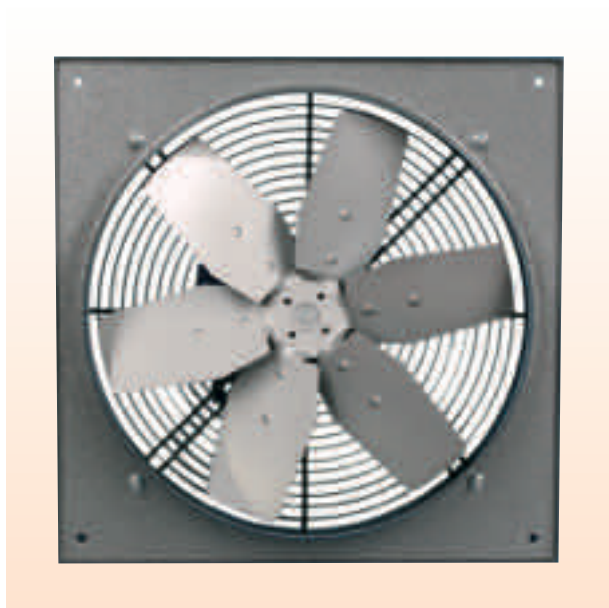
Articolo Art.	Watt Assorb. Absorbed Watt	Volt	Ø Ventola Ø Impeller	Ø A	B	m ³ /h	N. Poli No. Poles	N. Pale No. Blades
VLG.781	130	230	300 A	360	146	2200	2	7
VLG.782	130	230	300 P	360	146	2200	2	7
VLG.775	55	230	300 A	360	146	980	6	5
VLG.776	55	230	300 P	360	146	980	6	5
VLG.777	74	230	350 A	422	164	1380	6	5
VLG.778	74	230	350 P	422	164	1380	6	5
VLG.779	80	400	350 A	422	164	1400	6	5
VLG.780	80	400	350 P	422	164	1400	6	5

Articolo Art.	Watt Assorb. Absorbed Watt	Volt	Ø Ventola Ø Impeller	Ø A	B	m ³ /h	N. Poli No. Poles	N. Pale No. Blades
VLG.759	90	230	250 A	320	136	1310	2	9
VLG.760	90	230	250 P	320	136	1310	2	9
VLG.761	50	230	250 A	320	136	700	4	5
VLG.762	50	230	250 P	320	136	700	4	5
VLG.763	85	230	300 A	360	146	1700	4	5
VLG.764	85	230	300 P	360	146	1700	4	5
VLG.765	75	400	300 A	360	146	1670	4	5
VLG.766	75	400	300 P	360	146	1670	4	5
VLG.767	126	230	350 A	422	164	2300	4	5
VLG.768	126	230	350 P	422	164	2300	4	5
VLG.769	125	400	350 A	422	164	2300	4	5
VLG.770	125	400	350 P	422	164	2300	4	5
VLG.783	180	230	400 A	470	180	3700	4	5
VLG.784	180	230	400 P	470	180	3700	4	5
VLG.785	180	400	400 A	470	180	3675	4	5
VLG.786	180	400	400 P	470	180	3675	4	5
VLG.787	250	230	450 A	522	190	5050	4	5
VLG.788	250	230	450 P	522	190	5050	4	5
VLG.789	250	400	450 A	522	190	5140	4	5
VLG.790	250	400	450 P	522	190	5140	4	5
VLG.791	390	400	500 P	570	190	6765	6	5
VLG.792	170	400	500 A	570	190	4480	6	5
VLG.793	430	230	630 A	750	225	9150	6	5
VLG.794	435	400	630 A	750	225	7880	6	5

A = Aspirante / In P = Premente / Out

ELETTROVENTILATORI ELICOIDALI MONTATI SU PANNELLO QUADRO

HELICAL ELECTRIC FANS FITTED TO SQUARE PANEL



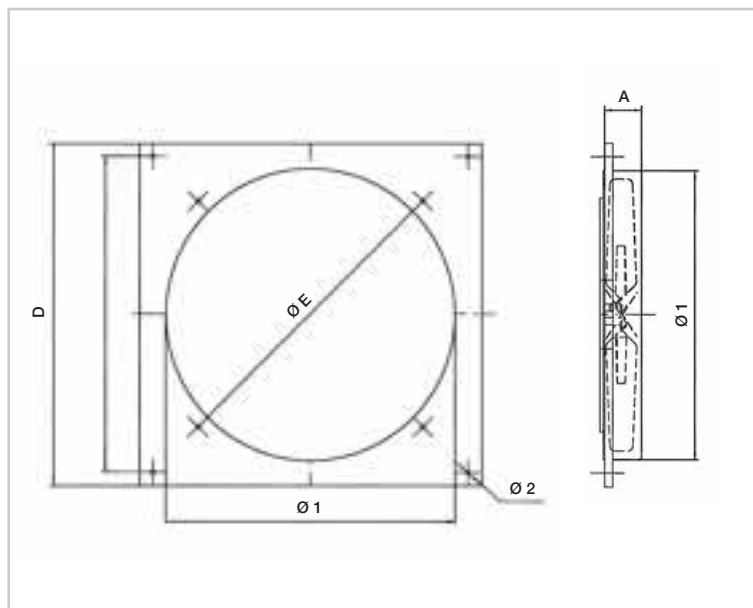
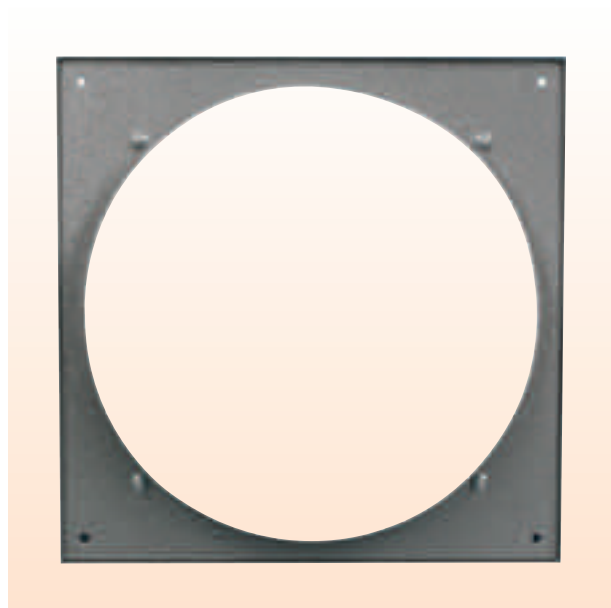
Per ventilazione ed estrazione d'aria da ambienti civili ed industriali. Dotati di griglia antinfortunistica in acciaio. È possibile cambiare il senso del flusso d'aria mediante inversione della rotazione del motore.

For ventilation and extraction of air from civil and industrial environments. Equipped with steel safety grille. The air flow direction can be changed by inverting the motor rotation.

Articolo Art.	Watt Resi Watt given	Poli Poles	Ø Ventola Ø Impeller	Vers.	Port. m ³ /h Flow m ³ /h	Motore HP Motor HP	A	B	C	D	Ø 1	Ø 2	dB (A)
VLG.604	30	4	250	V.230	900	0.04	53	87	280	320	272	7	53
VLG.605	40	4	300	V.230	1500	0.05	54	86	330	370	322	7	57
VLG.606	60	4	300	V.230 V.400	1500	0.08	54	176	330	370	322	7	58
VLG.608	60	4	350	V.230	2000	0.08	62	178	390	430	373	7	61
VLG.631	60	4	350	V.230 V.400	2000	0.08	62	178	390	430	373	7	61
VLG.612	90	4	400	V.230	2500	0.12	60	185	460	500	420	7	65
VLG.633	90	4	400	V.230 V.400	2500	0.12	60	185	460	500	420	7	65
VLG.634	180	4	450	V.230	3500	0.25	80	200	500	550	470	11	70
VLG.635	180	4	450	V.230 V.400	3500	0.25	80	200	500	550	470	11	70
VLG.636	250	4	500	V.230	4500	0.35	90	200	590	640	520	11	74
VLG.637	250	4	500	V.230 V.400	4500	0.35	90	200	590	640	520	11	74
VLG.638	180	6	500	V.230 V.400	3500	0.25	90	200	590	640	520	11	63
VLG.640	750	4	600	V.230	9000	1.00	110	220	680	730	620	11	78
VLG.641	750	4	600	V.230 V.400	9000	1.00	110	220	680	730	620	11	78
VLG.642	370	6	600	V.230 V.400	5000	0.50	110	240	680	730	620	11	66

PANNELLO QUADRO PER ELETTROVENTILATORI ELICOIDALI E VENTILATORI ASSIALI

SQUARE PANEL FOR HELICAL ELECTRIC FANS AND AXIAL BLOWERS



Telaio quadro per ventilatori serie VLG 600 e VLG 700.
Square frame for fans series VLG 600 and VLG 700.

Articolo Art.	Ventilatore Ø Pala Ø Fan Blade	A	C	D	Ø E	Ø 1	Ø 2
TQ.250	Ø 250	53	280	320	305	272	7
TQ.300	Ø 300	54	330	370	362	322	7
TQ.350	Ø 350	62	390	430	411	373	7
TQ.400	Ø 400	60	460	500	455	420	7
TQ.450	Ø 450	80	500	550	510	470	11
TQ.500	Ø 500	90	590	640	560	520	11
TQ.600	Ø 600	110	680	730	670	620	11

VENTILATORI ASSIALI MONOFASI E TRIFASI CON MOTORE COMPATTO MONTATI SU PANNELLO QUADRO

SINGLE-PHASE AND THREE-PHASE AXIAL FANS WITH COMPACT MOTOR MOUNTED ON SQUARE PANEL

FORNIBILI SU RICHIESTA

AVAILABLE ON REQUEST

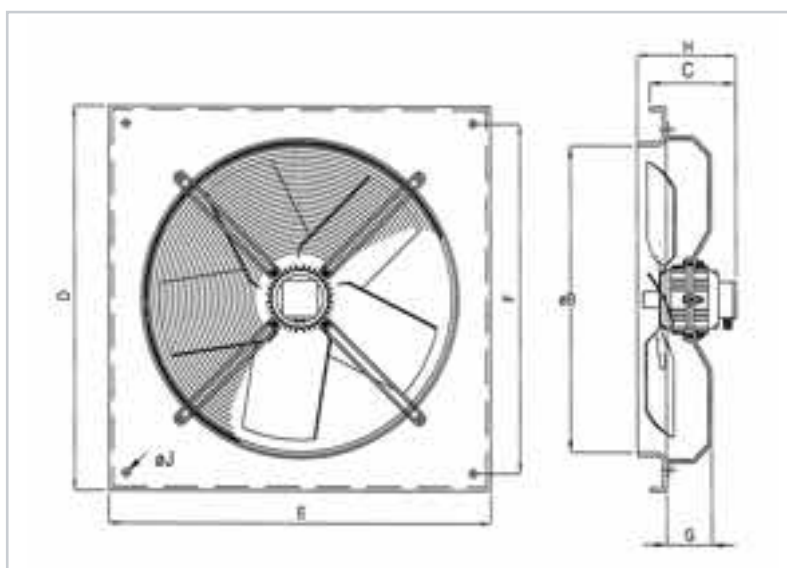


I ventilatori della serie VLG 900, presentano caratteristiche costruttive che ne consentono sia l'utilizzo in applicazioni industriali, che l'installazione in ambienti terziari (officine, negozi, allevamenti, serre) dove vi sia la necessità dell'impiego di un ventilatore di facile installazione, bassi consumi e livelli di pressione sonora ridotti.

Ventola con pale in alluminio e raggiera in acciaio tropicalizzato a cinque pale fino al diametro 650 mm e sette pale per il diametro 710 mm.

The VLG 900 series fans, present constructive characteristics that allow both the utilization in the industrial applications and the installations in the tertiary environments (workshops, stores, breedings, glasshouses) where there is the real necessity of the employment of a fan with easy installation, low consumption, and reduced noise pressure levels.

Fan with blades made of aluminium and radiant crown made of galvanised steel with five blades till the diameter of 650 mm and with seven blades till the diameter of 710 mm.



VENTILATORI ASSIALI MONOFASI E TRIFASI CON MOTORE COMPATTO MONTATI SU PANNELLO QUADRO

SINGLE-PHASE AND THREE-PHASE AXIAL FANS WITH COMPACT MOTOR MOUNTED ON SQUARE PANEL

Articolo Monofase <i>Article Single-Phase</i>	Articolo Trifase <i>Article Three-Phase</i>												
230 V	230/400 V	Watt assorb. <i>Abs. Watt</i>	Ø Ventola <i>Ø Impeller</i>	Giri <i>RPM</i>	Port. max m ³ /h <i>Max flow m³/h</i>	B	C	D-E	F	G	H	Ø J	dB (A)
VLG.900	VLG.950	160	250 A	2800	2300	255	70	350	300	55	95	7	61
VLG.901	VLG.951	160	250 P	2800	2300	255	70	350	300	55	95	7	61
VLG.902	VLG.952	29	250 A	1400	1000	255	70	350	300	55	95	7	49
VLG.903	VLG.953	29	250 P	1400	1000	255	70	350	300	55	95	7	49
VLG.904	VLG.954	280	310 A	2800	4000	320	185	400	350	55	210	7	71
VLG.905	VLG.955	280	310 P	2800	4000	320	185	400	350	55	210	7	71
VLG.906	VLG.956	90	310 A	1380	2200	320	70	400	350	55	95	7	55
VLG.907	VLG.957	90	310 P	1380	2200	320	70	400	350	55	95	7	55
VLG.910	VLG.958	130	350 A	1410	2500	360	70	450	400	55	95	7	52
VLG.911	VLG.959	130	350 P	1410	2500	360	70	450	400	55	95	7	52
VLG.912	VLG.960	220	400 A	1390	5300	410	185	500	450	70	210	7	60
VLG.913	VLG.961	220	400 P	1390	5300	410	185	500	450	70	210	7	60
VLG.914	VLG.962	80	400 A	900	3500	410	185	500	450	70	210	7	52
VLG.915	VLG.963	80	400 P	900	3500	410	185	500	450	70	210	7	52
-	VLG.964	270	445 A	1370	5800	451	185	550	500	70	210	7	63
-	VLG.965	270	445 P	1370	5800	451	185	550	500	70	210	7	63
VLG.916	VLG.966	490	445 A	1400	8000	451	205	550	500	100	245	7	68
VLG.917	VLG.967	490	445 P	1400	8000	451	205	550	500	100	245	7	68
VLG.918	VLG.968	237	445 A	900	5300	451	205	550	500	100	240	7	58
VLG.919	VLG.969	237	445 P	900	5300	451	205	550	500	100	240	7	58
VLG.920	VLG.970	610	497 A	1420	10000	503	205	600	550	100	240	9	64
VLG.921	VLG.971	610	497 P	1420	10000	503	205	600	550	100	240	9	64
VLG.922	VLG.972	300	497 A	905	6000	503	205	600	550	100	240	9	58
VLG.923	VLG.973	300	497 P	905	6000	503	205	600	550	100	240	9	58
-	VLG.974	900	552 A	1420	13400	559	220	680	630	100	255	9	71
-	VLG.975	900	552 P	1420	13400	559	220	680	630	100	255	9	71
-	VLG.976	800	552 A	1370	11000	559	205	680	630	100	240	9	67
-	VLG.977	800	552 P	1370	11000	559	205	680	630	100	240	9	67
VLG.926	-	350	552 A	910	8000	559	205	680	630	100	240	9	61
VLG.927	-	350	552 P	910	8000	559	205	680	630	100	240	9	61
-	VLG.978	400	552 A	910	8000	559	205	680	630	100	240	9	61
-	VLG.979	400	552 P	910	8000	559	205	680	630	100	240	9	61
-	VLG.980	1100	627 A	907	17500	634	220	730	680	100	255	9	73
-	VLG.981	1100	627 P	907	17500	634	220	730	680	100	255	9	73
VLG.928	VLG.982	500	627 A	907	12100	634	205	730	680	100	240	9	62
VLG.929	VLG.983	500	627 P	907	12100	634	205	730	680	100	240	9	62
-	VLG.984	850	703 A	850	18500	710	185	950	900	90	250	9	70
-	VLG.985	850	703 P	850	18500	710	185	950	900	90	250	9	70

ELETTROVENTILATORI AD AZIONE ASPIRANTE PENTAVALENTI

ELECTRIC BLOWERS WITH SUCTION ACTION WITH FIVE DIFFERENT TYPES OF FIXATION

Per raffreddamento motori, congelatori, banchi e vetrine frigorifere.

For cooling of engines, freezers, refrigerator counters and showcases.



CARATTERISTICHE TECNICHE:

Esecuzione chiusa.

Motore Monofase a 4 poli schermati.

Giri /min 1300 - V 230 - Hz 50/60

Coperchi in lega leggera - Albero temperato e lappato.

Cuscinetti autoallineati ed autolubrificati

Adatti per temperature da - 30° C a + 45° C.

A servizio continuo.

TECHNICAL CHARACTERISTICS:

Closed execution.

Shielded 4 poles single-phase motor.

1300 rpm - 230 V - Hz 50/60

Covers in light alloy - Hardened and lapped shaft.

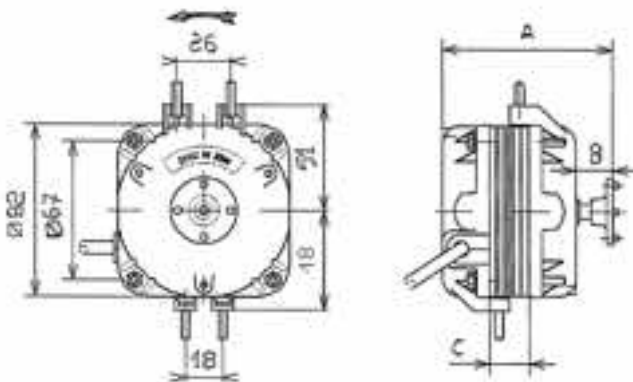
Self-aligned and self-lubricated bearings.

Suitable for temperatures from - 30° C to + 45° C.

Continuous operation.

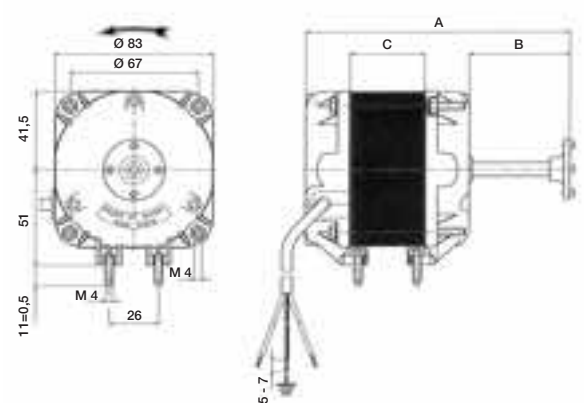
VL.205 ÷ VL.234 Rotazione antioraria vista lato albero

Anti-clockwise rotation side shaft view



VL.125L Rotazione antioraria vista lato albero

Anti-clockwise rotation side shaft view



Motori pentavalevoli / Motors with five different types of fixation

Articolo Art.	Watt Resi Watt Given	Watt assorb. Abs. Watt	m ³ /h	A	B	C
VL.205	5	29	520	78	21	13
VL.210	10	43	750	85	22	19
VL.216	16	63	1080	96	21	25
VL.225	25	75	1600	115	26	38
VL.234	34	100	1950	115	28	38
VL.125L	25	95	1600	139	53	40

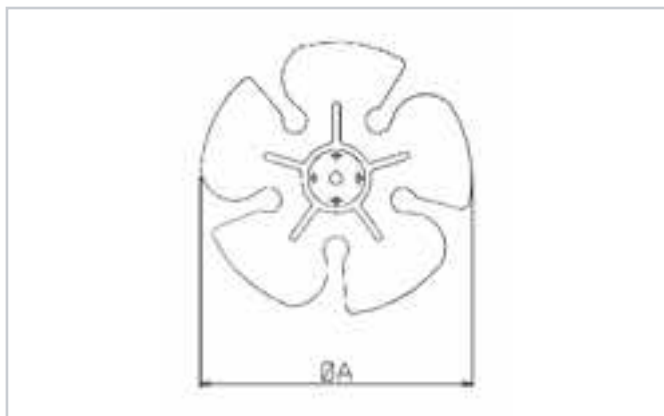
Tutti i ventilatori sono venduti senza accessori e ventole.

All the fans are sold without accessories and fans.

ACCESSORI PER ELETTROVENTILATORI

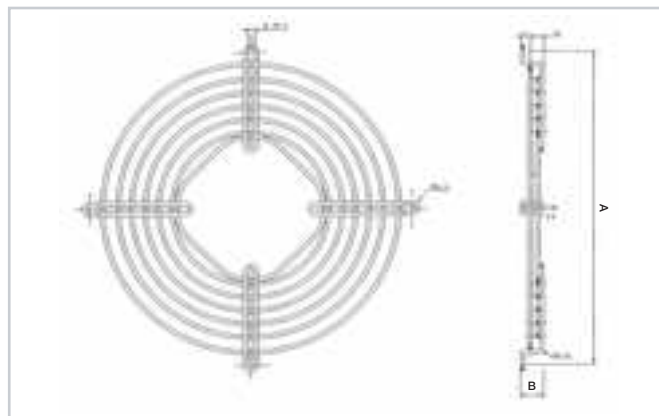
ACCESSORIES FOR ELECTRIC FANS

VENTOLA / IMPELLER



Articolo Art.	A Ø	Ang.	Modello Vent. Fan model
V.205	200	28°	VL.205
V.210	250	22°	VL.210
V.216	300	22°	VL.216
V.225	300	28°	VL.225 VL.125L
V.234	300	34°	VL.234

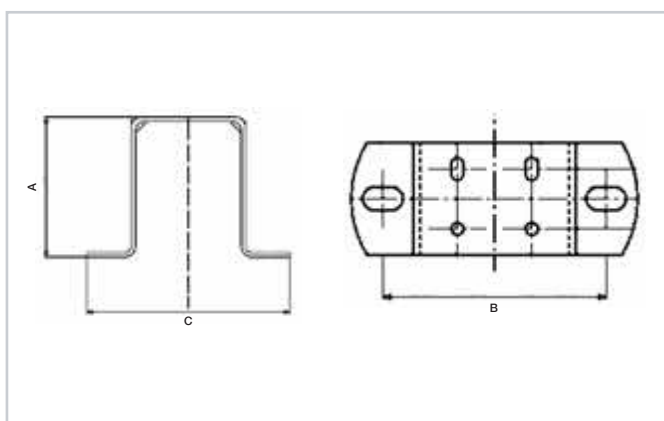
RETE / GRID



***IN ESAURIMENTO / RUNNING OUT**

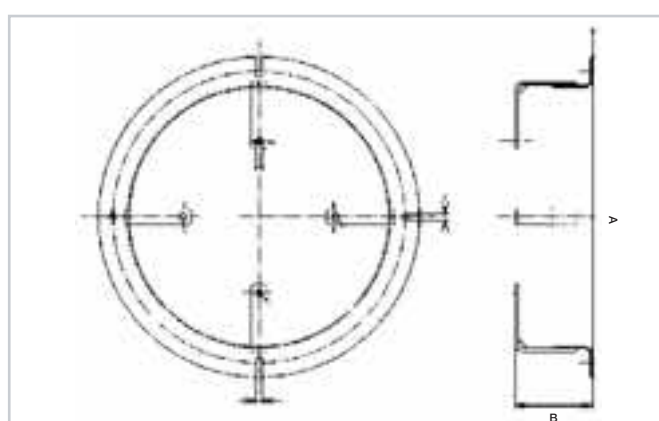
Articolo Art.	A Ø	B	Modello Vent. Fan model
*R.200	236	17	VL.205
R.254	290	17	VL.210
R.300	344	17	VL.216 VL.225 VL.234 VL.125L

STAFFA / BRACKET



Articolo Art.	A	B	C	Modello Vent. Fan model
S.200	72	81	106	VL.205
S.254	84	83	108	VL.210
S.300	109	78	100	VL.216 VL.225 VL.234 VL.125L

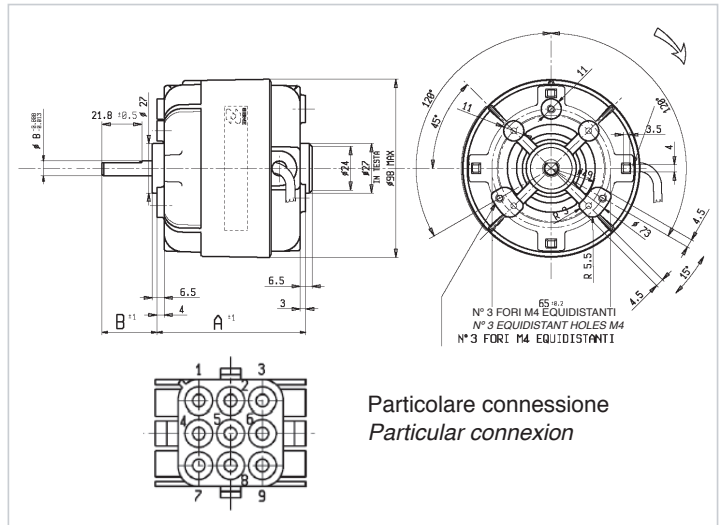
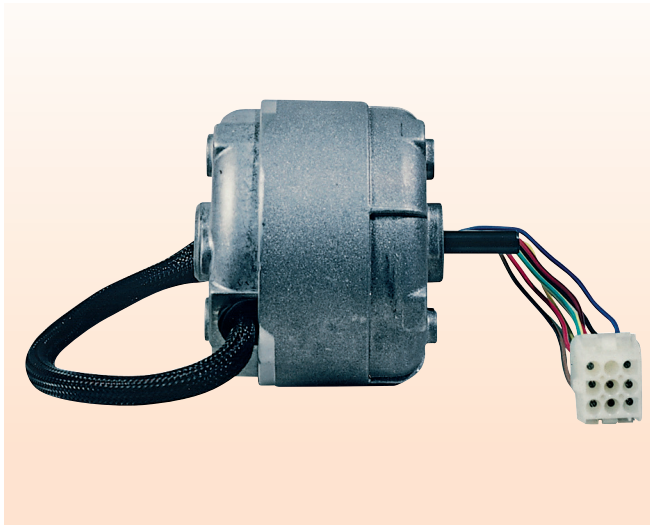
ANELLO / RING



Articolo Art.	A Ø	B	Modello Vent. Fan model
A.200	236	48.5	VL.205
A.254	290	48.5	VL.210

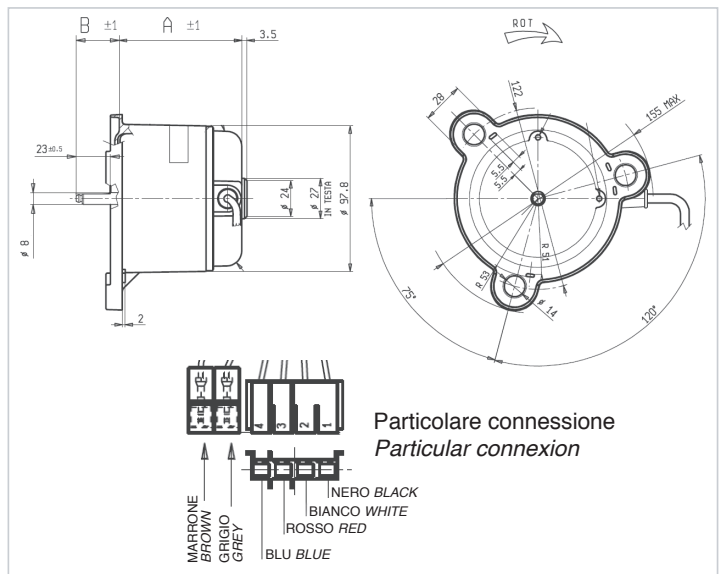
MOTORI PER VENTOLE TANGENZIALI

MOTORS FOR TANGENTIAL IMPELLERS



Motori monofase di piccole dimensioni a 4 POLI - 4/5 velocità / Small sized single-phase motors 4 POLES - 4/5 speed

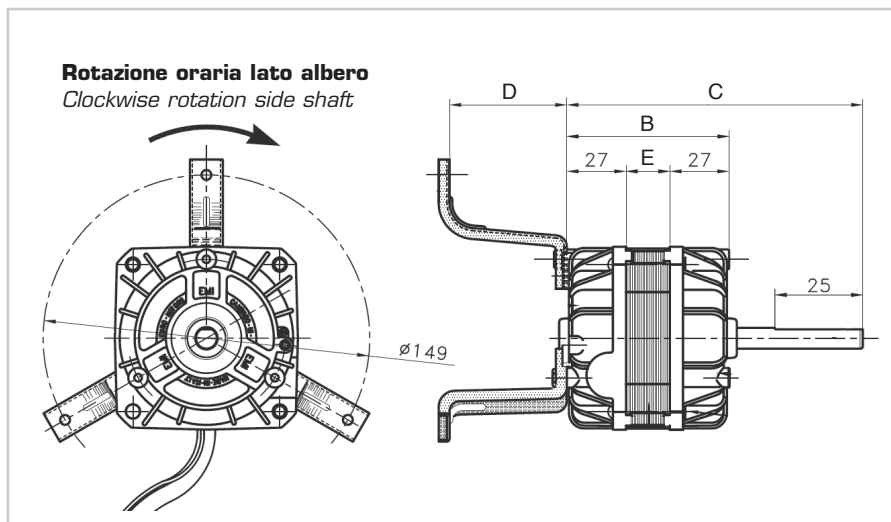
Articolo Art.	Modello Model	Watt Resi Watt given	Giri RPM	Esecuzione Model	A	B	C
TRM.340	K35410M01305	43	1070	Chiuso / Enclosed	30	81.4	97
TRM.350	K35410M01306	73	1200	Chiuso / Enclosed	30	81.4	97



Articolo Art.	Modello Model	Watt Resi Watt given	Giri RPM	Esecuzione Model	A	B
TRM.360	K35410M01649	72	1250	Chiuso / Enclosed	82,4	27

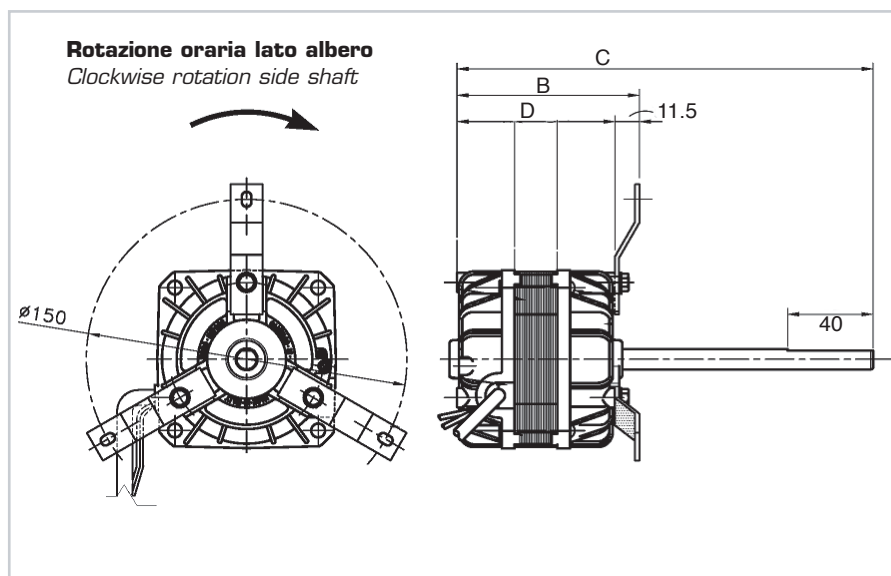
MOTORI MONOFASE PER VENTILCONVETTORI

SINGLE-PHASE MOTORS FOR FAN COILS



Articolo Art.	Modello Model	V	Hz	A	Watt Resi Watt given	Watt ass. Abs. watt	N. vel. No. speed	Giri RPM	B	C	D	E	Ø Albero Ø Shaft
VL.252	83-2025/01	230	50	0.46	25	100	4	1100	74	106	53.5	20	9.52

NOVITÀ
NEW



Articolo Art.	Modello Model	V	Hz	A	Watt Resi Watt given	Watt ass. Abs. watt	N. vel. No. speed	Giri RPM	B	C	D	Ø Albero Ø Shaft
VL.253	83-2015/08	230	50	0.46	13	50	4	1100	85.5	195	53.5	9.52

VENTILATORI ASSIALI COMPATTI

COMPACT AXIAL BLOWERS

Fig. 1



Fig. 2



Impiego:

Per raffreddamento centraline, gruppi di continuità, quadri di comando, ecc.

Use: Cooling of control units, emergency power units, control panels, etc.

Su richiesta è possibile fornire la serie VLA con tensioni diverse.

Upon request it's possible to supply the VLA series with different voltages.

230 V 50/60 HZ

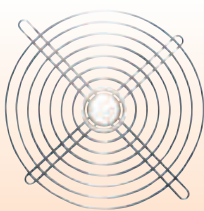
Articolo Art.	Potenza W Power W	Giri /min RPM	Dimensioni mm. Dimensions mm.	m ³ in aria libera m ³ free air	dB (A)	Fig.
VLA.13	14/12	2500/3000	80x80x38	40.8/49.8	36/32	1
VLA.15	16/14	2400/2900	92x92x25	43.2/52.2	36/32	1
VLA.17	17/15	2700/3100	120x120x38	156/180	46/45	1
VLA.35	38/33	2800/3100	172x150x51	330/280	55/50	2

24 V C.C.

Articolo Art.	Potenza W Power W	Giri /min RPM	Dimensioni mm. Dimensions mm.	m ³ in aria libera m ³ free air	dB (A)	Fig.
VLA.3	3	2200	80x80x25	27	29	1
VLA.5	2.16	2300	92x92x25	42	33	1
VLA.7	3.90	2300	120x120x38	96	43	1

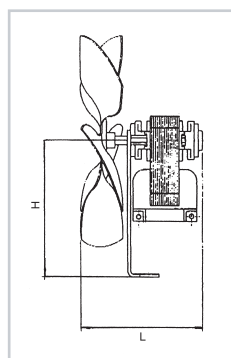
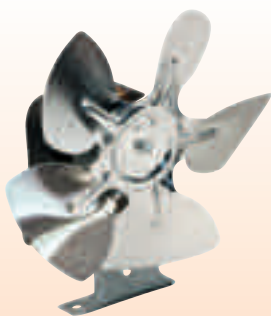
GRIGLIE DI PROTEZIONE PER VENTILATORI ASSIALI COMPATTI

PROTECTION GRILLES FOR COMPACT AXIAL BLOWERS



Articolo Art.	Dimensioni mm. Dimensions mm.	Per modello For model
GB.01	80x80	VLA.3 - VLA.13
GB.02	120x120	VLA.7 - VLA.17
GB.03	172x150	VLA.35

VENTILATORI ASSIALI / AXIAL BLOWERS



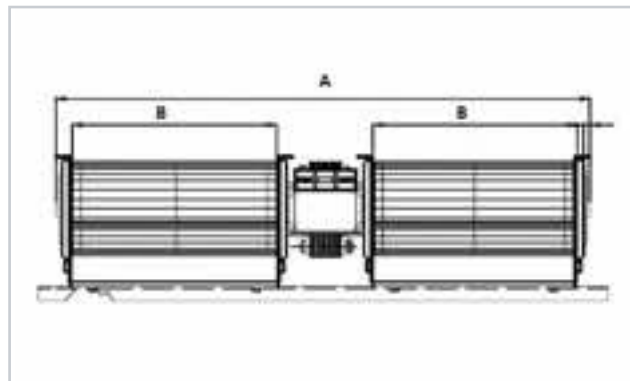
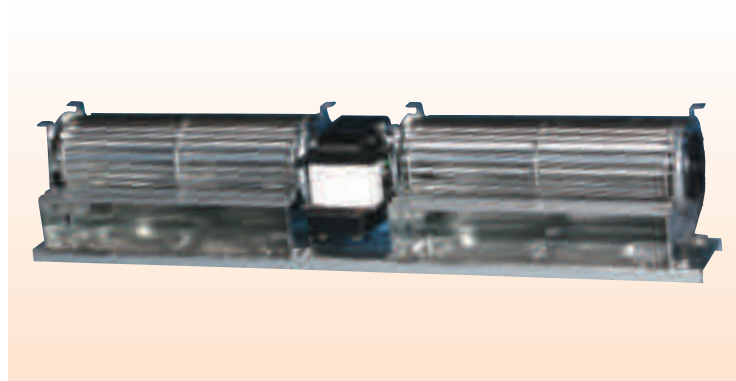
Articolo Art.	Pacco motore mm Motor casing mm	Watt	Dimensioni mm. Dimensions mm.		
			H	L	Ø Ventola Ø impeller
VL.53	15	15	95	73	130
VL.54	15	15	95	86	150
VL.55	30	19	95	92	170

Impiego: da utilizzare nel settore della refrigerazione. Motore aspirante a 2 poli 220V 50 HZ.

Use: To be used in the refrigeration sector. 2 poles suction motor 220V 50 Hz.

VENTILATORI TANGENZIALI

TANGENTIAL BLOWERS



Applicazione:

Unità di riscaldamento, refrigerazione e condizionamento, distributori automatici.

Application:

Heating, refrigerating and air-conditioning units, automatic dispensers.

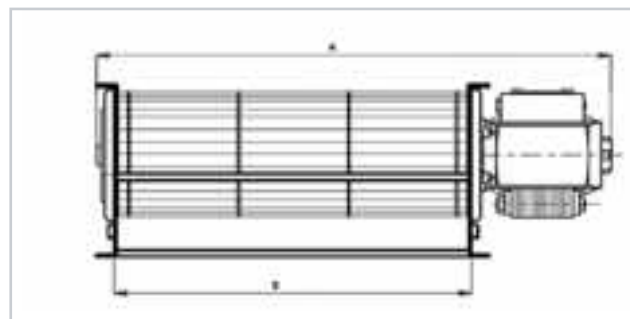
Caratteristiche:

Motore monofase a poli schermati adatto per servizio continuo.

Characteristics:

Single-phase motor with shielded poles suitable for continuous operation.

Articolo Art.	Modello Model	Watt assorbiti Abs. watt	Giri in aria libera Rpm	m ³ /h	A	B
TZ.225	TGD 60/1 180/30	38	1540	220	470	184
TZ.227	TGD 60/1 270/30	38	1100	248	645	274
TZ.228	TGD 60/1 360/30	32	785	270	840	364
TZ.230	TGD 60/1 300/30	33	910	230	705	313



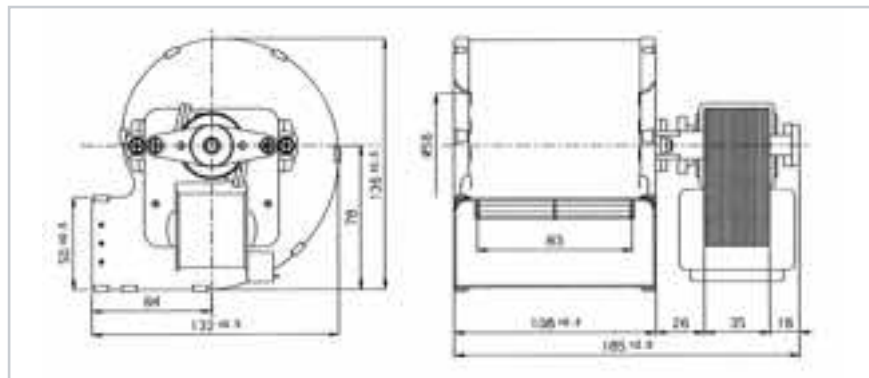
Articolo Art.	Motore Motor	Modello Model	Watt assorbiti Abs. watt	Giri in aria libera Rpm	m ³ /h	A	B
TZ.110 S	Sinistro/Left	TG 60/1 90/15	19	2200	68	153	94
TZ.110 D	Destro/Right	TG 60/1 90/15	19	2200	68	153	94
TZ.111 S	Sinistro/Left	TG 60/1 120/20	25	2350	95	148	124
TZ.111 D	Destro/Right	TG 60/1 120/20	25	2350	95	148	124
TZ.113 S	Sinistro/Left	TG 60/1 180/20	24	1635	140	248	184
TZ.113 D	Destro/Right	TG 60/1 180/20	24	1635	140	248	184
TZ.114 S	Sinistro/Left	TG 60/1 180/30	30	1868	161	258	184
TZ.114 D	Destro/Right	TG 60/1 180/30	30	1868	161	258	184
TZ.116 S	Sinistro/Left	TG 60/1 270/30	38	1630	200	348	274
TZ.116 D	Destro/Right	TG 60/1 270/30	38	1630	200	348	274
TZ.118 S	Sinistro/Left	TG 60/1 300/30	31	1350	166	378	300
TZ.118 D	Destro/Right	TG 60/1 300/30	31	1350	166	378	300
TZ.117 S	Sinistro/Left	TG 60/1 360/30	42	1320	200	438	364
TZ.117 D	Destro/Right	TG 60/1 360/30	42	1320	200	438	364

N.B. In foto il motore è sul **Lato Destro (D)**

N.B. In the picture the motor is on the **Right Side (D)**

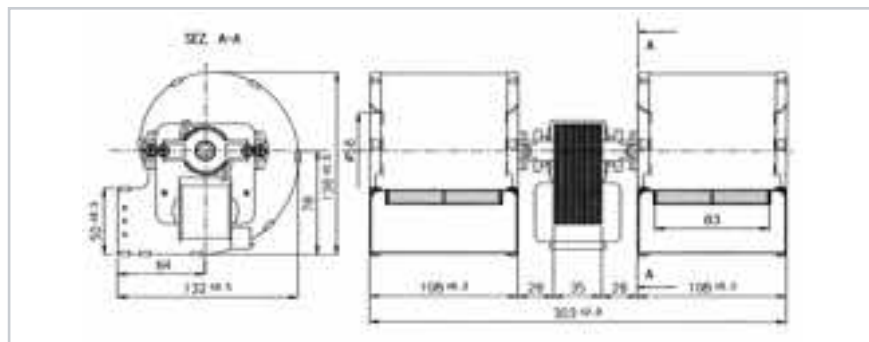
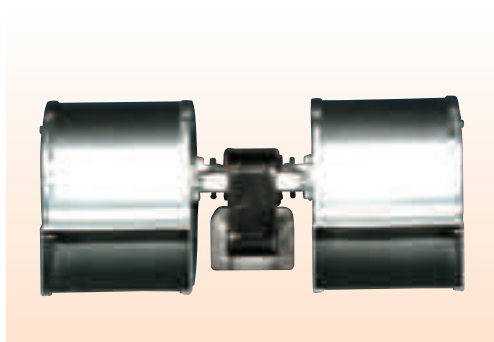
VENTILATORI CENTRIFUGHI A DOPPIA ASPIRAZIONE

DUAL-SUCTION CENTRIFUGAL FANS



Motore monofase a 1 velocità / 1 speed single-phase motor

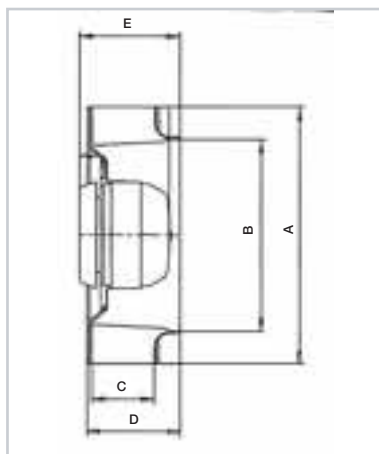
Articolo Art.	Watt assorb. Abs. Watt	Port. aspiratore m ³ /h Air flow rate m ³ /h	Milliampere m/A	Senso di rotazione Direction of rotation	Giri/min RPM	Poli Poles
VC.443	114	258	1140	Destro / Right	2670	2
VC.444	114	258	1140	Sinistro / Left	2670	2



Articolo Art.	Watt assorb. Abs. Watt	Port. aspiratore m ³ /h Air flow rate m ³ /h	Milliampere m/A	Senso di rotazione Direction of rotation	Giri/min RPM	Poli Poles
VC.445	133	450	1220	Destro / Right	2300	2

VENTILATORI RADIALI CON PALE ROVESCE

RADIAL FANS WITH REVERSED BLADES



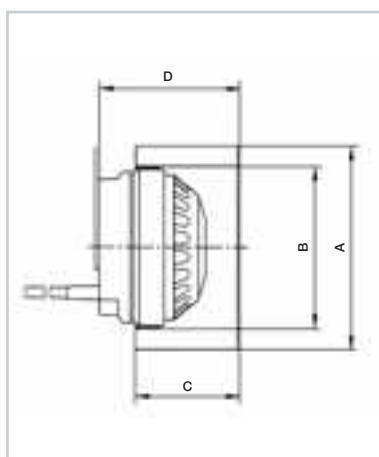
Ventilatori a semplice aspirazione, monofasi, a 2 o 4 poli, con condensatore permanente o a poli schermati.
230 V - 50 Hz
Costruite in nylon caricato vetro.

*Suction fans, single-phase, 2/4 poles, with permanent or shielded-pole condenser.
230V - 50 Hz
Made of nylon reinforced with glass.*

Articolo Art.	Watt	Ampere Amps	μF	m^3/h	Giri Rpm	dB (A)	A	B	C	D	E
VPR.133	26	0.12	1	170	2650	50	133	94	42	53.6	77.5
VPR.175	51	0.23	2	410	2460	63	175	131	44	63	67.5
VPR.180	50	0.25	2	380	2500	63	180	133	30	58	66
VPR.190	57	0.25	2	520	2440	67	190	133	44	63	68.5
VPR.220	85	0.37	3	810	2500	65	220	162	44	64	71
VPR.250	160	0.72	4	1350	2460	70	250	175	57	89	96
VPR.280	250	1.17	8	1550	2510	76	280	189	50	80	103.5
VPR.310	130	0.60	4	1610	1380	64	315	220	100	137	161

VENTILATORI RADIALI CON PALE AVANTI

RADIAL FANS WITH FORWARD BLADES



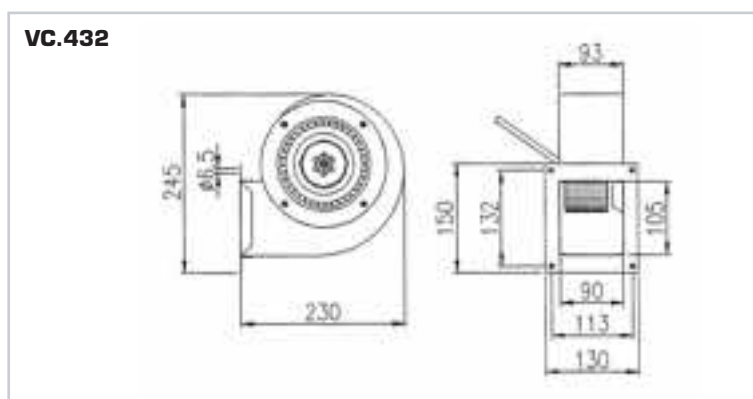
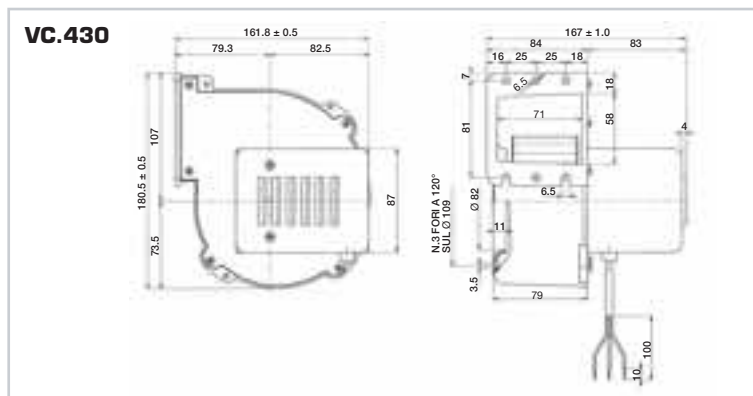
Ventilatori a semplice aspirazione, monofasi, a 2 poli, con condensatore permanente.
230 V - 50 Hz
La ventola è costruita in lamiera zincata.
Classe d'isolamento B

*Suction fans, single-phase, 2-poles, with permanent condenser.
230V - 50 Hz
Fan made of galvanised sheet.
Insulation class B*

Articolo Art.	Watt	Ampere Amps	μF	m^3/h	Giri Rpm	dB (A)	A	B	C	D
VPA.108	44	0.20	1.5	155	1650	54	108	84	52	63
VPA.120	80	0.35	1.5	255	2700	45	120	92	62	85
VPA.140	90	0.35	2.5	480	2700	72	140	92	60	90
VPA.160	260	1.10	5	630	2600	75	150	92	62	72

VENTILATORI CENTRIFUGHI

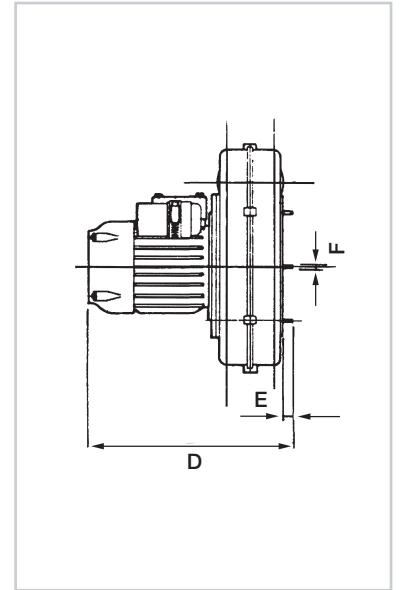
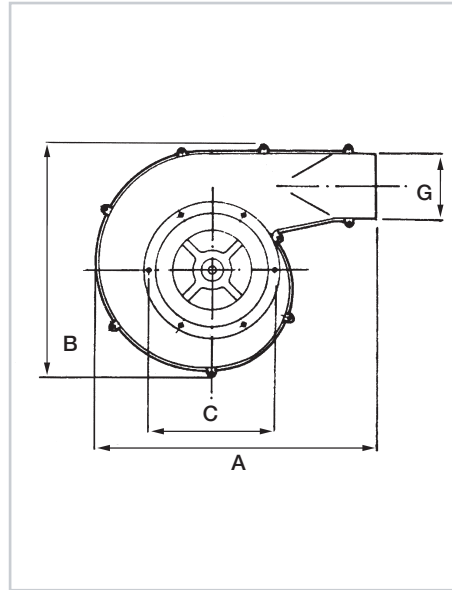
CENTRIFUGAL BLOWERS



Articolo Art.	Materiale Material	Watt Assorbiti Absorbed Watt	Port. m ³ /h Flow m ³ /h
VC.430	Alluminio / Alumin.	80	238
VC.432	Lamiera / Sheet	120	420

ASPIRATORI CENTRIFUGHI

CENTRIFUGAL ASPIRATORS



Impiego:

Questi aspiratori sono stati concepiti per particolari usi gravosi, quali aspirazione di polveri derivanti dall'impiego di utensili come smerigliatrici o levigatrici, ecc.

Ventola in alluminio a pale riportate, equilibrate elettronicamente a 2800 giri.

Chiocciola stampata in fibra di vetro Moplen resistente a 160°C. Particolarmente adatta a resistere a determinati acidi come trielina, percloro, diluenti, ecc.

Motore largamente dimensionato, adatto per servizio continuo.

Cuscinetti a tenuta stagna e protetti da speciali anelli.

Use:

These aspirators were designed for particularly heavy use, such as suction of dust from the use of tools such as sanding and honing machines, etc.

Aluminium impeller with inserted blades, electronically calibrated at 2800 rpm.

Moplen glass fibre forged volute resistant to 160°C. Particularly suitable to resist certain acids such as trichlorethylene, perchlorate, thinners, etc.

Large sized motor suitable for continuous operation.

Waterproof bearings protected by special rings.

Articolo Art.	Giri motore al 1' Motor RPM	Portata Max m ³ h Max flow m ³ h	Prevalenza Max mm. H2D Max Head H2D	Potenza motore (HP) Motor Power (HP)
VC.210	2800	780	74	0.35 Monofase / Single-phase
VC.311	2800	780	74	0.35 Trifase / Three-phase

A	B	C	D	E	F	G
390	325	178	295	15	Diam. 6 M	100

ASPIRATORI CENTRIFUGHI

CENTRIFUGAL ASPIRATORS

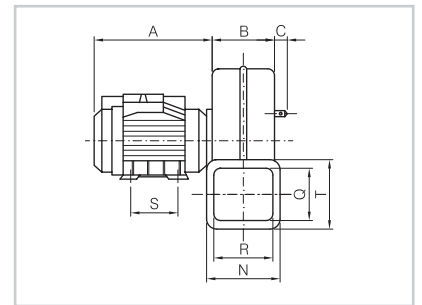
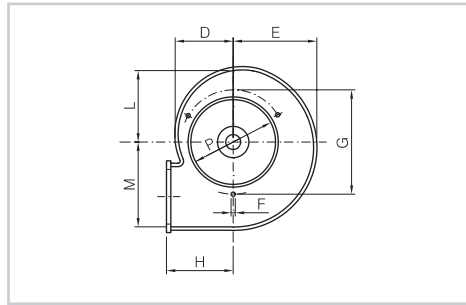


Impiego:

Per l'aspirazione di fumi, vapori, aria, piccoli impianti di depurazione. Ventola costruita in lega leggera stampata. Chiocciola costruita in termoplastico ABS. Motore chiuso a ventilazione esterna. Attacco a flangia nella chiocciola.

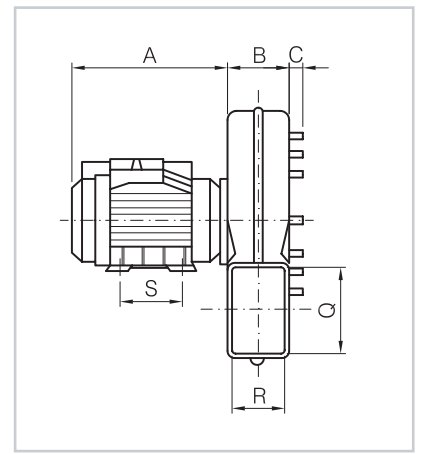
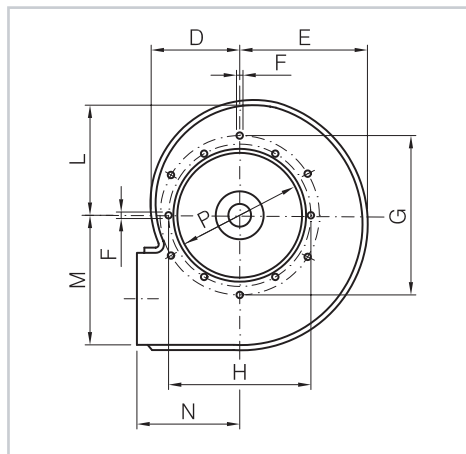
Use:

For aspiration of flue gas, steam, air, small purification plants. Impeller made of forged light alloy. Volute made of ABS. Enclosed motor, external ventilation. Flange coupling in volute.



Articolo Art.	Giri motore al 1' Motor RPM	Portata Max m ³ h Max flow m ³ h	Prevalenza Max mm. H2D Max Head H2D	Potenza motore (HP) Motor Power (HP)
VC.220	2800	1050	68	0.50 Monofase / Single-phase
VC.231	2800	1050	68	0.35 Trifase / Three-phase

A	B	C	D	E	F	G	H	L	M	N	P	Q	R	S	T
195	105	12	90	130	m6	170	100	110	140	130	140	85	100	80	125



Articolo Art.	Giri motore al 1' Motor RPM	Portata Max m ³ h Max flow m ³ h	Prevalenza Max mm. H2D Max Head H2D	Potenza motore (HP) Motor Power (HP)
VC.230	2800	1100	95	0.50 Monofase / Single-phase
VC.241	2800	1100	95	0.35 Trifase / Three-phase

A	B	C	D	E	F	G	H	L	M	N	P	Q	R	S
195	75	12	115	140	m6	200	178	132	168	130	155	106	66	80

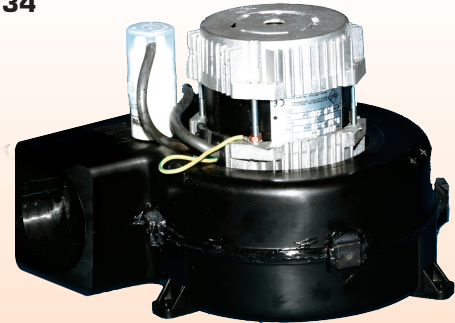
ASPIRATORI CENTRIFUGHI

CENTRIFUGAL ASPIRATORS

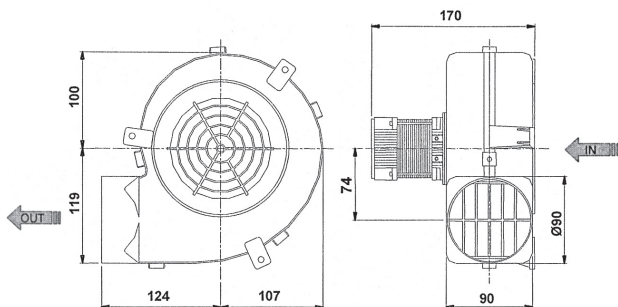
VC.133



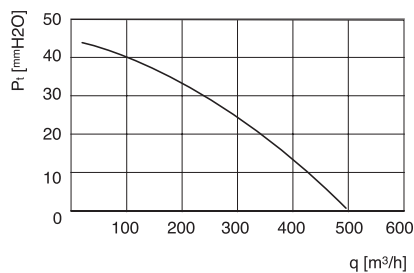
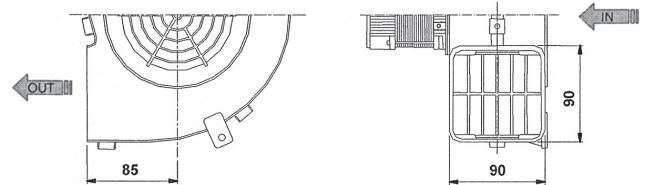
VC.134



Bocca di mandata tonda
Round delivery outlet



Bocca di mandata quadra
Square delivery outlet



P_b 753 mm_{Hg}
 t 17.5 °C
 γ 1.2 Kg/m³

Impiego:

Tavoli da stiro per l'aspirazione di fumi, vapori, piccoli impianti di depurazione, serre.
Motore monofase costruzione B14 - Ventola in alluminio stampata. Chiocciola in ABS o nylon.
Griglie di protezione sia sull'aspirazione che la mandata.

Use:

Ironing boards, smokes and steams suction, little purification systems, greenhouses.
Motor single-phase construction B14. Printed air propeller in aluminium. Volute in ABS or nylon. Protection grids both on suction inlet and delivery outlet.

Articolo Art.	Bocca di mandata Delivery outlet	Giri motore al 1' Motor RPM	Portata Max m ³ h Max flow m ³ h	Prevalenza Max mm. H2D Max Head H2D	Potenza motore (HP) Motor Power (HP)
VC.133	Tonda / Round	2900	500	44	0.11
VC.134	Quadra / Square	2900	500	44	0.11

VENTILATORI CENTRIFUGHI

CENTRIFUGAL BLOWERS



Impiego:

Adatti per riscaldamento, refrigerazione e condizionamento.
Aspirazione di fumi in genere per usi civili ed industriali.

Motore:

Monofase 230V - 50HZ
2 Poli
Classe B

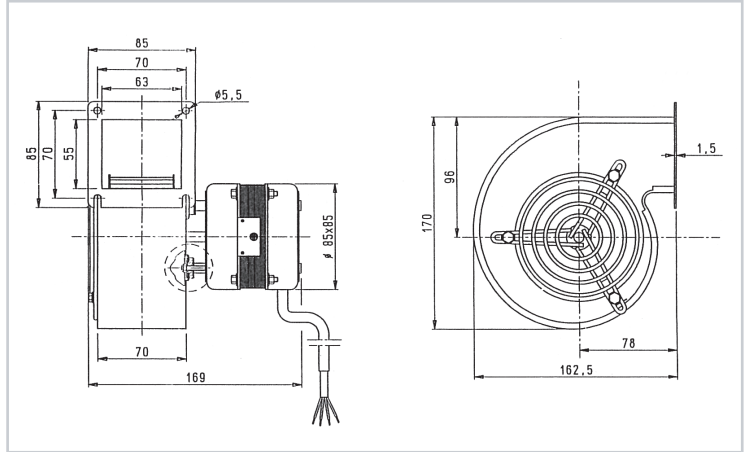
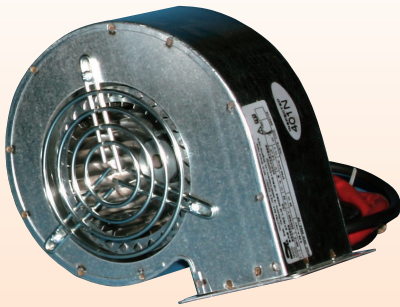
Use:

Suitable for heating, cooling, conditioning and flue gas removal in general for civil and industrial use.

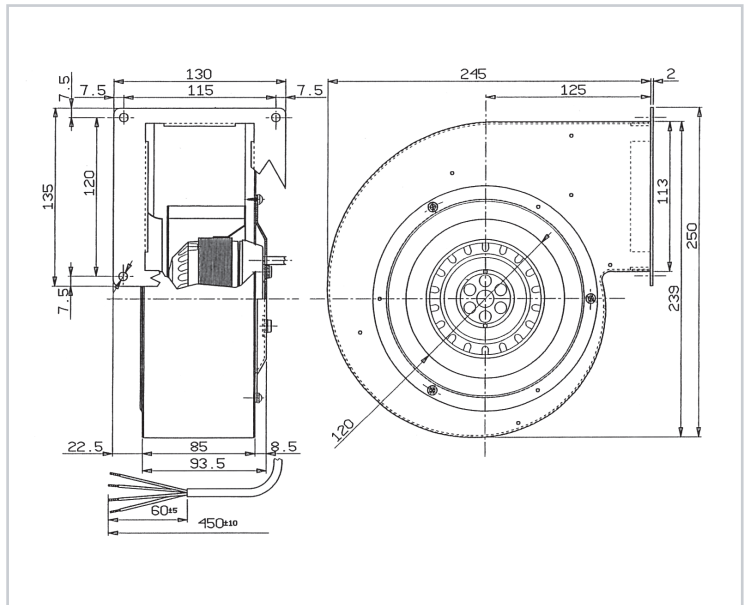
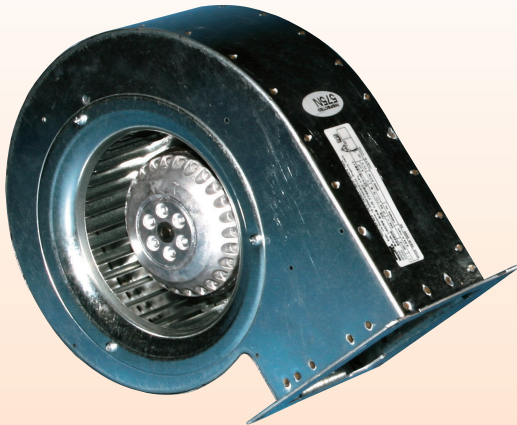
Motor:

Single-phase 230V - 50 Hz
2 Poles
Class B

art. **VC.441**



art. **VC.442**



Articolo Art.	Modello Model	Watt resi Watt given	Portata d'aria m ³ /h Air flow rate m ³ /h	Giri RPM	Condensatore µF Capacitor µF	Amp.	dB (A)
VC.441	SAIR 97/52	25	210	2800	1.5	0.25	56.8
VC.442	SAIR 140/59	89	460	2800	4	0.65	61.5

VENTILATORI CENTRIFUGHI

CENTRIFUGAL BLOWERS

DIRETTAMENTE ACCOPPIATI IN SERIE UNIFICATA / DIRECTLY COUPLED IN UNIFIED SERIES

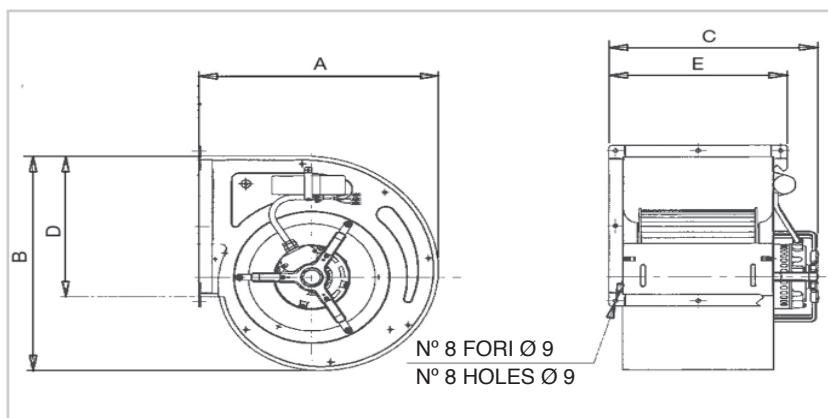


Impiego:

Per estrazioni e/o immissione aria pulita su impianti di ventilazione civili ed industriali. Motore ad 1 velocità. Solo per l'art. VC.511 il motore è a 3 velocità.

Use:

For extraction or intake of clean air in civil and industrial ventilation systems. 1 Speed motor. 3 speed motor for art. VC.511 only.



Articolo Art.	Serie Series	Watt	Poli Poles	Amp.	Portata M ³ /H Air flow rate M ³ /H	A	B	C	D	E
VC.511	DD7/7	145	MON. 4	1.3	1600	316.5	325	299	208	232
VC.520	DD9/9	147	MON. 6	2.25	2000	380.5	387	316	262	298
VC.525	DD9/9	300	MON. 4	3.5	2800	380.5	387	316	262	298
NOVITÀ NEW VC.526	DD10/8	550	MON. 4	3.8	3200	424.5	443	311	289	265
VC.530	DD10/10	245	MON. 6	3.8	3000	426.5	443	435	289	331
VC.535	DD10/10	373	MON. 4	4.8	3200	426.5	443	435	289	331
NOVITÀ NEW VC.536	DD12/9	736	MON. 6	6	5000	492.5	521	427	341.5	309
NOVITÀ NEW VC.537	DD12/9	1100	TRIF. 6	5.7	7000	492.5	521	427	341.5	309
NOVITÀ NEW VC.538	DD12/12	570	MON. 6	3.8	7500	492.5	521	513	341.5	395
VC.540	DD12/12	1100	TRIF. 6	5.7	8200	492.5	521	513	341.5	395

Mon. = Monofase / Single-phase Trif. = Trifase / Three-phase

ELETTROVENTILATORI NICOTRA CON MOTORE A STATORE ROTANTE

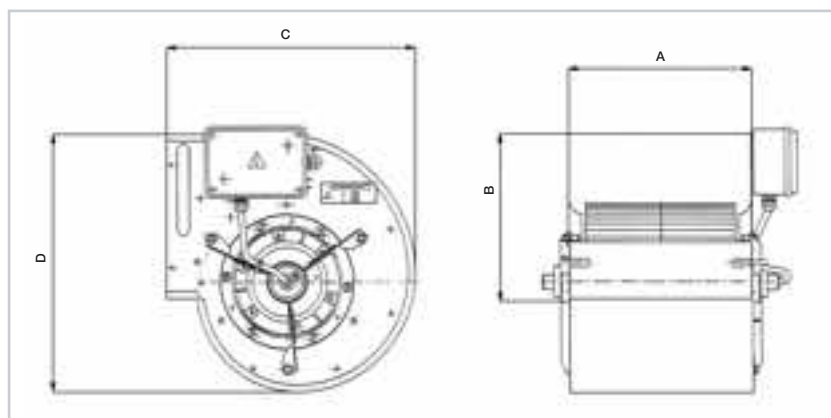
NICOTRA ELECTRIC BLOWERS WITH ROTATING STATOR MOTOR

PER CAPPE ASPIRANTI CIVILI ED INDUSTRIALI

FOR CIVIL AND INDUSTRIAL EXTRACTION HOODS

Motore monofase a 1 velocità variabile mediante regolatore (fornibile su richiesta)
4 poli - 1400 giri - esecuzione chiusa - grado di protezione IP44-IP55.

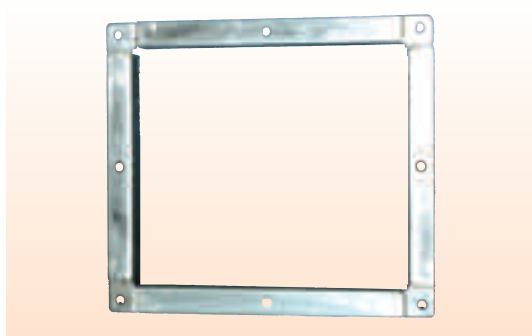
Single-phase, 1 speed motor variable by means of regulator (available on request)
4 poles - 1400 RPM - enclosed operation - insulation standard IP44 - IP55.



Articolo Art.	Serie Series	Watt resi Watt given	Amp.	Portata M ³ /H Air flow rate M ³ /H	A	B	C	D
VC.560	DDM 7/7	184	1.9	1500	232	208	314.5	325
VC.565	DDM 9/7	420	3.6	2800	232	262	378.5	387
VC.570	DDM 9/9	420	3.6	3000	298	262	378.5	387
VC.575	DDM 10/8	550	4.6	3000	265	289	424.5	443
VC.580	DDM 10/10	550	4.6	3500	331	289	424.5	443

FLANGE PER ELETTROVENTILATORI CENTRIFUGHI SERIE DD-DDM

FLANGES FOR CENTRIFUGAL ELECTRIC FANS SERIES DD-DDM



Articolo Art.	Serie Series
F7.7	7/7
F9.7	9/7
F9.9	9/9
F10.8	10/8
F10.10	10/10
F12.9	12/9
F12.12	12/12

NOVITÀ
NEW

VENTILATORI CENTRIFUGHI

CENTRIFUGAL BLOWERS

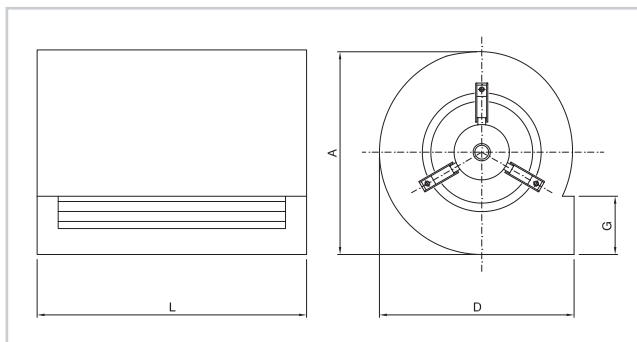


Impiego:

Condizionatori autonomi, ventilazione generica di media ed alta portata. Motore monofase 4 velocità - 4 poli.

Use:

Independent conditioners, general ventilation of medium-high capacity. Single-phase motor, 4 speed, 4 poles.



Articolo Art.	Watt	Portata d'aria m ³ /h Air flow rate m ³ /h	A	D	G	L
VC.451	15	380	207	196	97	231
VC.452	25	450	207	196	97	273

Su richiesta è possibile fornire solo il motore. Only motor can be supplied on request.

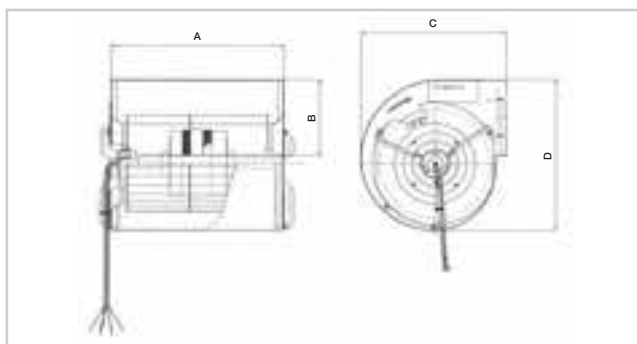


Impiego:

Condizionamento, caminetti domestici, condotte d'aria forzata. Motori monofasi 2/4 poli.

Use:

Air-conditioning, domestic fireplaces, forced air ducts. Single-phase 2/4-poles motors.



Articolo Art.	Watt assorb. Abs. Watt	Velocità Speed	Giri RPM	Amp.	dB (A)	m ³ /h max	Esecuzione Construction	A	B	C	D
VC.461	63	3	1250	0.28	55	560	Chiuso/Enclosed	232	104	198	207
VC.462	70	1	1300	0.3	55	705	Chiuso/Enclosed	232	104	198	207
VC.466*	90	1	1300	0.4	57	610	Chiuso/Enclosed	232	93	178	180
VC.463	100	1	1300	0.46	59	780	Chiuso/Enclosed	176	105	229	244
VC.464	100	1	1300	0.46	55	875	Chiuso/Enclosed	232	104	198	207
VC.467	190	1	2200	0.84	56	830	Chiuso/Enclosed	232	104	198	207
VC.465	125	2	1300	0.56	59	845	Chiuso/Enclosed	176	105	229	244

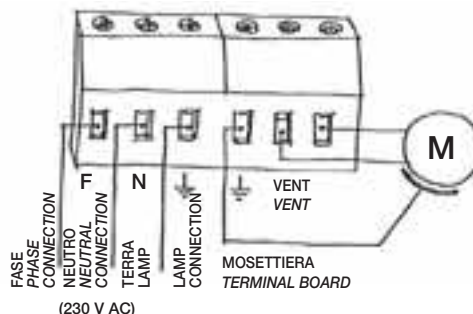
* Specifico per caminetti e stufe a pellet. Specific for fireplaces and pellet stoves.

REGOLATORI DI VELOCITÀ PER ELETTROVENTILATORI AD 1 VELOCITÀ

REGULATORS FOR 1 SPEED ELECTRICAL FANS

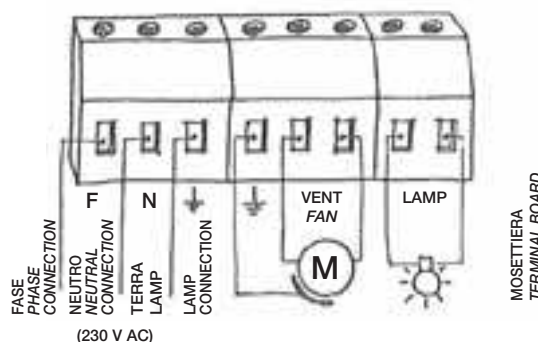
SONO UTILIZZABILI SU TUTTI I MOTORI MONOFASE, COMPRESA LA NOSTRA SERIE TRM-VC.
THEY CAN BE USED ON SINGLE-PHASE MOTORS, INCLUDING OUR TRM-VC SERIES.

RES.04



Articolo Art.	Amp Max	L mm.	P mm.	H mm.
RES.04	01 ÷ 4	110	76	50

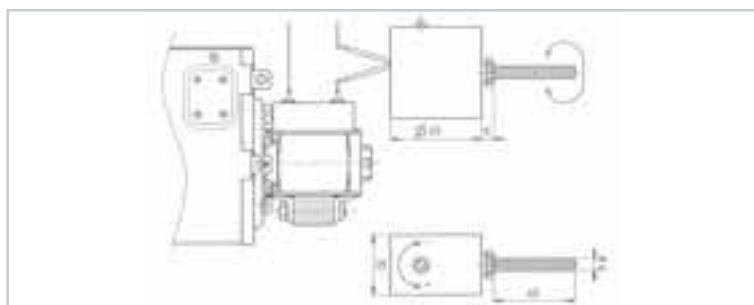
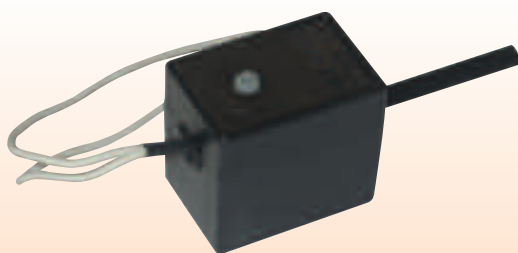
RES.08



Articolo Art.	Amp Max	L mm.	P mm.	H mm.
RES.08	02 ÷ 8	132	90	62

REGOLATORE DI VELOCITÀ PER VENTILATORI E TANGENZIALI

ELECTRONIC SPEED CONTROL FOR CENTRIFUGAL AND TANGENTIAL FANS



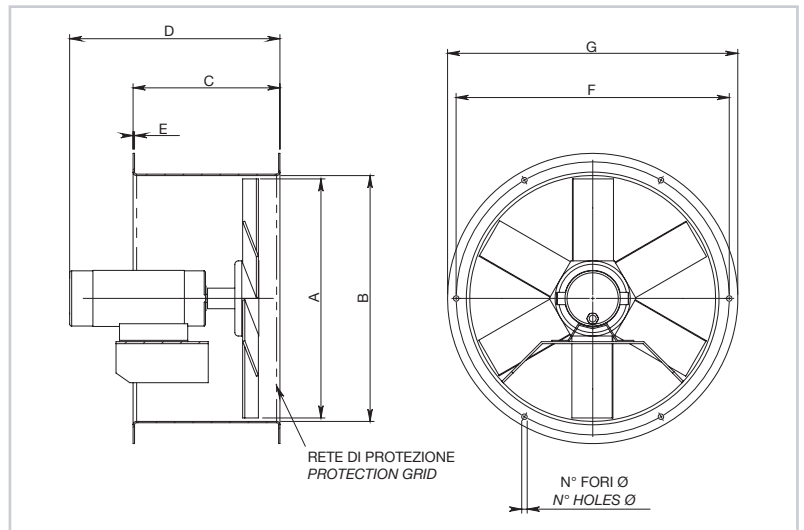
Articolo Art.	Watt Max Max Watt	Amp.	Dimensioni mm. Dimensions mm.
RES.01	200	0 - 1.4	30x45x91

VENTILATORI ELICOIDALI

HELICOIDAL ELECTRIC BLOWERS



Corrente continua (c.c.) / Direct current (d.c.)
Corrente alternata (c.a.) / Alternate current (a.c.)



DESCRIZIONE E APPLICAZIONI

Ventilatori elicoidali largamente utilizzati sulle imbarcazioni per l'aspirazione e la ventilazione di aria nei locali chiusi (WC, cucine, sala macchine, ecc.)

DESCRIPTION AND USE

Helicoidal electric blowers widely used on boats for suction and aspiration of air in closed environment (WC, kitchens, engine rooms, etc.)

CARATTERISTICHE COSTRUTTIVE

- Carcassa: lamiera di acciaio verniciato.
- Ventola: costruita in polipropilene (temperatura di esercizio: $-5^{\circ}\text{C} + 80^{\circ}\text{C}$), dinamicamente e staticamente bilanciata.

CONSTRUCTION FEATURES

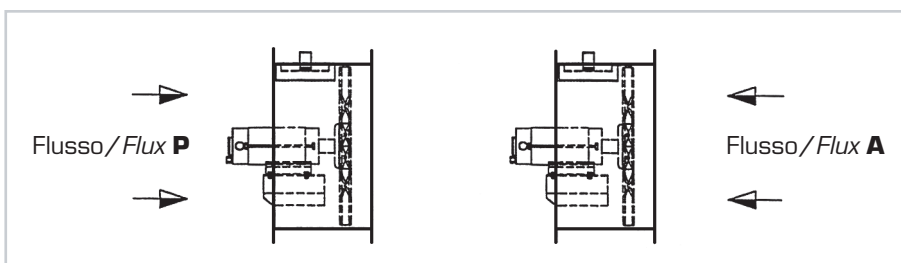
- Drum casing: made of painted steel sheet.
- Fan: made in polypropylene, (temperature range $-5^{\circ}\text{C} + 80^{\circ}\text{C}$) dynamically and statically balanced.

MOTORE

- Corrente Continua:
Motore elettrico a magneti permanenti 12/24V, protezione IP 23÷44, Classe di Isolamento F, Servizio continuo (S1).
- Corrente Alternata:
Motore elettrico asincrono 230 V monofase (M) / 230÷400 V trifase (T), 50 Hz, protezione IP 44÷55, Classe di Isolamento F, Servizio continuo (S1).

MOTOR

- Direct Current:
Permanent magnets motor 12/24 V, Protection IP 23÷44, Insulation Class F, Continuous Duty (S1).
- Alternate Current:
Induction electric motor, 230 V single-phase (M) / 230÷400 V three-phase (T), 50Hz, Protection IP44÷55, Insulation Class F, Continuous Duty (S1).



ORIENTAMENTO / ORIENTATION

Flusso A = ventilatore

A flux = ventilator

Flusso P = estrattore

P flux = extractor

Da specificare in fase di ordine.

To specify in the order.

Prestazioni / Performances

Articolo Art.	Voltaggio Voltage	Potenza Power		Assorbimento Absorption	Giri/min RPM	dB (A)	Portata Max. Max. delivery	Pressione Max. Max. pressure
	V	HP	KW	A	(m ³ /min.)		(mmH ₂ O)	
VLE.25	12	0,4	0,3	17	2500	68	37	19
	24	0,4	0,3	9	2500	68	37	19
	230M	0,5	0,37	2,7	2800	72	42	20
	230÷400T	0,5	0,37	1,4÷0,8	2800	72	42	20
VLE.30	12	0,2	0,15	10	1400	60	42	10
	24	0,2	0,15	5	1400	60	42	10
	230M	0,25	0,18	1,8	1400	60	42	10
	230÷400T	0,25	0,18	1,2÷0,6	1400	60	42	10
VLE.30/2	24	0,5	0,37	14	2000	68	75	22
	230M	0,75	0,55	4	2800	74	80	35
	230÷400T	0,75	0,55	3÷1,7	2800	74	80	35
VLE.35	12	0,2	0,15	12	1400	60	62	16
	24	0,2	0,15	6	1400	60	62	16
	230M	0,25	0,18	1,8	1400	60	62	16
	230÷400T	0,25	0,18	1,2÷0,6	1400	60	62	16
VLE.35/2	24	0,5	0,37	16	2000	70	96	22
	230M	1,5	1,1	7,2	2800	72	100	60
	230÷400T	1,5	1,1	5÷2,9	2800	72	100	60
VLE.40	12	0,35	0,26	14	1400	65	70	20
	24	0,35	0,26	7	1400	65	70	20
	230M	0,25	0,18	1,8	1400	65	70	20
	230÷400T	0,25	0,18	1,2÷0,6	1400	65	70	20
VLE.40/2	24	0,75	0,55	20	2000	72	130	24
	230M	1,5	1,1	7,2	2800	78	135	70
	230÷400T	1,5	1,1	5÷2,9	2800	78	135	70
VLE.45	24	0,35	0,26	9	1400	68	108	20
	230M	0,35	0,26	2,6	1400	68	108	20
	230÷400T	0,35	0,26	1,6÷0,9	1400	68	108	20
VLE.45/2	24	0,8	0,6	28	2000	78	145	28
	230M	2	1,5	9,6	2800	82	175	74
	230÷400T	2	1,5	7,5÷4,3	2800	82	175	74
VLE.50	24	1	0,75	22	1400	74	160	28
	230M	1	0,75	5,1	1400	74	160	28
	230÷400T	1	0,75	3,6÷2,2	1400	74	160	28
VLE.56	24	1	0,75	22	1400	74	225	28
	230M	1	0,75	5,1	1400	74	225	28
	230÷400T	1	0,75	3,6÷2,2	1400	74	225	28
VLE.63	230M	1,5	1,1	7,2	1400	78	312	36
	230÷400T	1,5	1,1	5÷2,9	1400	78	312	36
VLE.71	230M	2	1,5	9,6	1400	78	330	36
	230÷400T	2	1,5	7,5÷4,3	1400	78	330	36
VLE.71/B	230÷400T	4	3	14÷8,2	1400	82	400	42

Dimensioni / Dimensions

Articolo Art.	Corrente Current	A	B	C	D	E	F	G	Fori Holes
VLE.25	c.c. - d.c.	240	250	200	325	1.5	285	315	No.6 x Ø10
VLE.25	c.a. - a.c.	240	250	200	325	1.5	285	315	No.6 x Ø10
VLE.30	c.c. - d.c.	305	315	200	300	1.5	348	378	No.6 x Ø11
VLE.30	c.a. - a.c.	305	315	200	295	1.5	348	378	No.6 x Ø11
VLE.30/2	c.c. - d.c.	305	315	200	330	1.5	348	378	No.6 x Ø11
VLE.30/2	c.a. - a.c.	305	315	200	330	1.5	348	378	No.6 x Ø11
VLE.35	c.c. - d.c.	350	360	215	300	1.5	400	425	No.6 x Ø11
VLE.35	c.a. - a.c.	350	360	215	295	1.5	400	425	No.6 x Ø11
VLE.35/2	c.c. - d.c.	350	360	215	330	1.5	400	425	No.6 x Ø11
VLE.35/2	c.a. - a.c.	350	360	215	400	1.5	400	425	No.6 x Ø11
VLE.40	c.c. - d.c.	400	410	215	330	1.5	440	473	No.6 x Ø11
VLE.40	c.a. - a.c.	400	410	215	330	1.5	440	473	No.6 x Ø11
VLE.40/2	c.c. - d.c.	400	410	215	370	1.5	440	473	No.6 x Ø11
VLE.40/2	c.a. - a.c.	400	410	215	410	1.5	440	473	No.6 x Ø11
VLE.45	c.c. - d.c.	450	460	230	330	1.5	495	523	No.6 x Ø11
VLE.45	c.a. - a.c.	450	460	230	330	1.5	495	523	No.6 x Ø11
VLE.45/2	c.c. - d.c.	450	460	230	380	1.5	495	523	No.6 x Ø11
VLE.45/2	c.a. - a.c.	450	460	230	410	1.5	495	523	No.6 x Ø11
VLE.50	c.c. - d.c.	500	510	270	400	1.5	545	573	No.8 x Ø11
VLE.50	c.a. - a.c.	500	510	270	400	1.5	545	573	No.8 x Ø11
VLE.56	c.c. - d.c.	560	570	300	400	1.5	605	633	No.8 x Ø11
VLE.56	c.a. - a.c.	560	570	300	400	1.5	605	633	No.8 x Ø11
VLE.63	c.a. - a.c.	630	640	300	420	2	675	704	No.8 x Ø11
VLE.71	c.a. - a.c.	700	710	300	450	2	745	774	No.12 x Ø14
VLE.71/B	c.a. - a.c.	700	710	300	510	2	745	744	No.12 x Ø14

Misure in millimetri (mm), dimensioni non impegnative.

Measures in millimeter (mm), dimensions approximated.

IMPORTANTE: In fase di ordine deve essere necessariamente indicato il senso di flusso e la tensione desiderata.

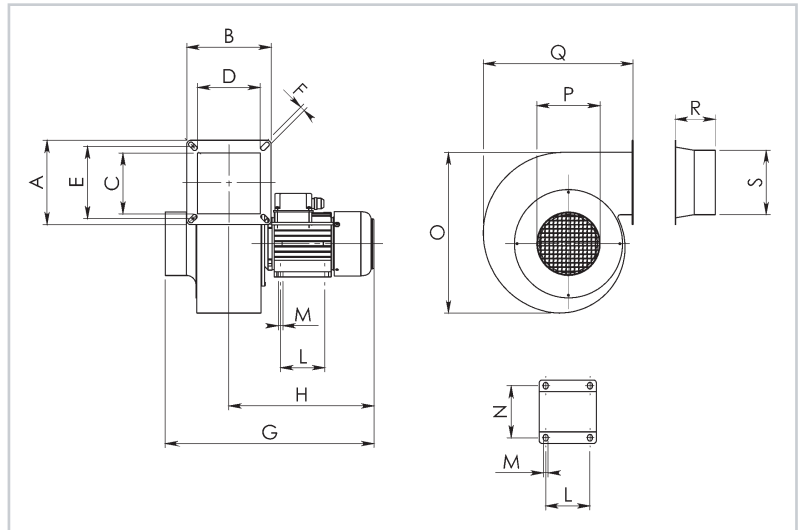
IMPORTANT: If an order is placed it must be necessarily indicated the flux and voltage of the blower.

VENTILATORI CENTRIFUGHI

CENTRIFUGAL ELECTRIC BLOWERS



Corrente continua (c.c.) / Direct current (d.c.)
Corrente alternata (c.a.) / Alternate current (a.c.)



DESCRIZIONE E APPLICAZIONI

Ventilatori centrifughi largamente utilizzati sulle imbarcazioni per l'aspirazione e la ventilazione di aria nei locali chiusi (WC, cucine, sala macchine, ecc.)

DESCRIPTION AND USE

Centrifugal electric blowers widely used on boards for suction and aspiration of air in closed environment (WC, kitchens, engine rooms, etc.)

CARATTERISTICHE COSTRUTTIVE

- Carcassa: a spirale in acciaio verniciato.
 - Ventola: in acciaio a pale inclinate in avanti, dinamicamente e staticamente bilanciata.
- Nota: i ns. ventilatori sono forniti di serie con le flange portatubo in aspirazione e in mandata e la rete di protezione in aspirazione.

CONSTRUCTION FEATURES

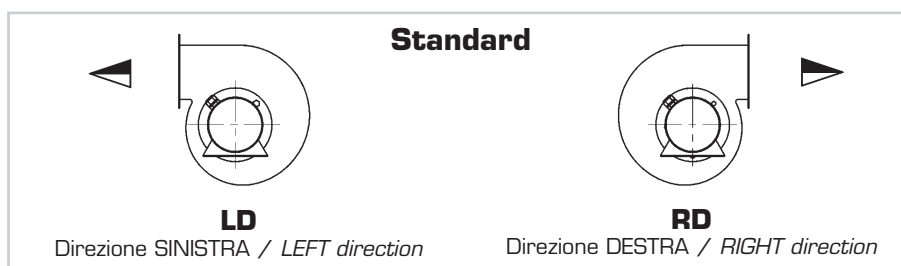
- Spiral casing: made in painted steel.
 - Fan: steel forward blade, dynamically and statically balanced.
- Note: our blowers are supplied of series with flanged fittings in the inlet and outlet side and a safety grid in the inlet side.

MOTORE

- Corrente Continua:
Motore elettrico a magneti permanenti 12/24V, protezione IP 23÷44, Classe di Isolamento F, Servizio continuo (S1).
- Corrente Alternata:
Motore elettrico asincrono 230 V monofase (M) / 230÷400 V trifase (T), 50 Hz, protezione IP44÷55, Classe di Isolamento F, Servizio continuo (S1).

MOTOR

- Direct Current:
Permanent magnets motor 12/24 V, Protection IP 23÷44, Insulation Class F, Continuous Duty (S1).
- Alternate Current:
Induction electric motor, 230 V single-phase (M) / 230÷400 V three-phase (T), 50Hz, Protection IP44÷55, Insulation Class F, Continuous Duty (S1).



Prestazioni / Performances

Articolo Art.	Voltaggio Voltage	Potenza Power		Assorbimento Absorption	Giri/min RPM	dB (A)	Portata Max. Max. delivery	Pressione Max. Max. pressure
	V	HP	KW	A	(m ³ /min.)		(mmH ₂ O)	
VC.002	12	0,09	0,07	3,2	2800	47	4,5	22
	24	0,09	0,07	1,6	2800	47	4,5	22
	230M	0,15	0,12	0,8	2800	47	4,5	22
	230÷400T	0,15	0,12	0,8÷0,5	2800	47	4,5	22
VC.003	12	0,25	0,18	8	2800	55	10	40
	24	0,25	0,18	4	2800	55	10	40
	230M	0,25	0,18	1	2800	60	10	40
	230÷400T	0,25	0,18	0,9÷0,6	2800	60	10	40
VC.004	12	0,15	0,12	6	2500	56	12	35
	24	0,15	0,12	3	2500	56	12	35
	230M	0,35	0,25	2,2	2800	65	15	45
	230÷400T	0,35	0,25	1,3÷0,8	2800	65	15	45
VC.015	12	0,35	0,25	24	1400	55	24	34
	24	0,35	0,25	12	1400	55	24	34
	230M	0,35	0,25	2,2	1400	55	24	34
	230÷400T	0,35	0,25	0,3÷0,8	1400	55	24	34
VC.028	12	0,4	0,3	26	2800	65	24	64
	24	0,4	0,3	14	2800	65	24	64
	230M	0,5	0,37	2,8	2800	65	24	64
	230÷400T	0,5	0,37	1,5÷0,9	2800	65	24	64
VC.023	12	0,75	0,55	30	2000	70	37	64
	24	0,75	0,55	22	2000	70	37	64
	230M	1,5	1,1	7	2800	76	58	130
	230÷400T	1,5	1,1	5÷2,9	2800	76	58	130
VC.025	24	0,75	0,55	30	1400	70	50	55
	230M	0,75	0,55	5,2	1400	70	50	55
VC.030	230÷400T	0,75	0,55	3,6÷2,2	1400	70	50	55
	230M	1,5	1,1	7,2	1400	74	95	75
VC.030	230÷400T	1,5	1,1	5÷2,9	1400	74	95	75

CORRENTE CONTINUA (C.C.) / DIRECT CURRENT (D.C.)

Dimensioni / Dimensions

Articolo Art.	Corrente Current	A	B	C	D	E	F	G	H	L	M	N	O	P	Q	R	S
VC.002	c.c. - d.c.	105	110	60	70	90	7	295	210	80	7	100	190	58	168	50	58
VC.003	c.c. - d.c.	140	140	85	85	110	7	370	255	80	7	100	270	98	225	60	98
VC.004	c.c. - d.c.	130	155	85	110	110	9	370	255	80	7	100	270	98	225	75	98
VC.028	c.c. - d.c.	160	160	110	110	135	9	390	270	90	8	112	322	118	273	75	98÷118
VC.015	c.c. - d.c.	190	190	140	140	135	9	415	275	90	8	112	405	148	338	75	148
VC.023	c.c. - d.c.	215	215	160	160	192	2xN°8	530	340	90	8	112	420	200	340	150	160
VC.025	c.c. - d.c.	255	255	200	200	232	2xN°8	570	370	90	8	112	510	250	420	150	200

CORRENTE ALTERNATA (C.A.) / ALTERNATE CURRENT (A.C.)

Dimensioni / Dimensions

Articolo Art.	Corrente Current	A	B	C	D	E	F	G	H	L	M	N	O	P	Q	R	S
VC.002	c.a. - a.c.	105	110	60	70	90	7	270	185	-	-	-	190	58	168	50	58
VC.003	c.a. - a.c.	140	140	85	85	110	7	320	225	80	7	100	270	98	225	60	98
VC.004	c.a. - a.c.	130	155	85	110	110	9	345	235	80	7	100	270	98	225	75	98
VC.028	c.a. - a.c.	160	160	110	110	135	9	360	260	90	8	112	322	118	273	75	98÷118
VC.015	c.a. - a.c.	190	190	140	140	135	9	385	265	80	7	100	405	148	338	75	148
VC.023	c.a. - a.c.	215	215	160	160	192	2xN°8	480	280	100	9.5	125	420	200	340	150	160
VC.025	c.a. - a.c.	255	255	200	200	232	2xN°8	520	320	90	8	112	510	250	420	150	200
VC.030	c.a. - a.c.	295	295	240	240	272	2xN°12	580	355	100	9.5	125	610	300	500	200	250

Misure in millimetri (mm), dimensioni non impegnative.

Measures in millimeter (mm), dimensions approximated.

IMPORTANTE: In fase di ordine deve essere necessariamente indicato il senso di flusso e la tensione desiderata.

IMPORTANT: If an order is placed it must be necessarily indicated the flux and voltage of the blower.

VENTILATORI ELICOCENTRIFUGHI PER CONDOTTI SERIE MIXVENT

HELICOCENTRIFUGAL FANS FOR DUCTS MIXVENT SERIES

FORNIBILI SU RICHIESTA
AVAILABLE ON REQUEST

NOVITÀ
NEW



CARATTERISTICHE TECNICHE:

I ventilatori del sistema Mixvent sono molto silenziosi grazie alla loro configurazione elicocentrifuga tubolare ed al design aerodinamico della loro girante.

Tutta la gamma è a doppia velocità: i motori sono monofase 230 V 50Hz e protetti termicamente mediante fusibile. Classe d'isolamento IP44.

Il cambio di velocità può essere realizzato mediante regolatore elettronico o commutatore elettromeccanico.

TECHNICAL CHARACTERISTICS:

Fans system Mixvent are very quiet thanks to their configuration helico-centrifugal tube and the aerodynamic design of their impeller.

The whole range is double speed: the engines are single-phase 230V 50Hz and thermally protected by a fuse. Insulation class IP44.

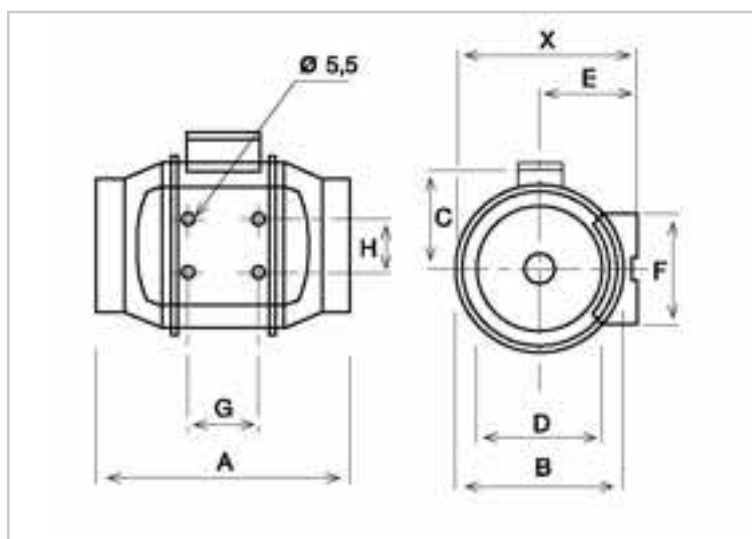
The speed change can be achieved through an electronic regulator or electromechanical switch.

Articolo Art.	Giri RPM	Watt assorb. Abs. Watt	Amp.	Portata d'aria m ³ /h Air flow rate m ³ /h	Temp. max °C	dBA
MIX.250	1880	39	0.26	250	40	28
	1475	26	0.18	185	40	23
MIX.350	2210	56	0.37	360	40	30
	1900	40	0.26	300	40	26
MIX.500	2500	68	0.30	535	60	41
	1850	50	0.22	400	60	33
MIX.800	2700	80	0.35	907	60	41
	2100	70	0.30	700	60	36
MIX.1300	2520	170	0.70	1300	60	49
	1990	110	0.48	950	60	44
MIX.2000	2760	350	1.30	1990	60	52
	2000	200	0.90	1510	60	50

VENTILATORI ELICOCENTRIFUGHI PER CONDOTTI SERIE MIXVENT

HELICOCENTRIFUGAL FANS FOR DUCTS MIXVENT SERIES

NOVITÀ
NEW



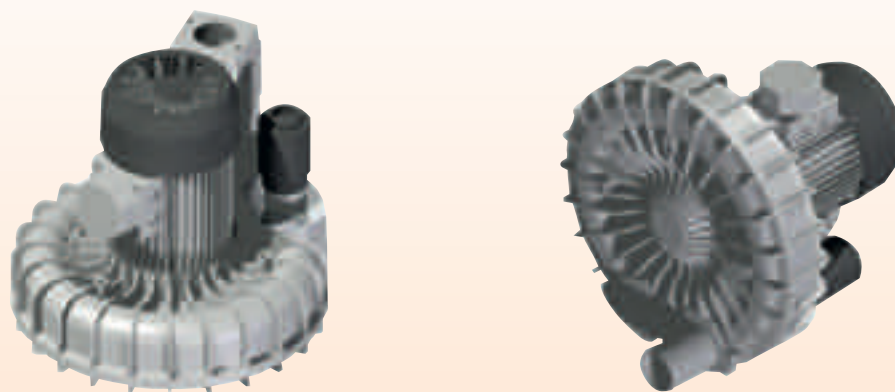
Articolo Art.	X	A	Ø B	C	Ø D	E	F	G	H
MIX.250	188	303	176	115	97	100	90	80	60
MIX.350	188	258	176	115	123	100	90	80	60
MIX.500	212	295	200	127	157	112	130	80	60
MIX.800	232.5	302	217	141	198	124	140	100	94
MIX.1300	291	386	272	192	248	155	168	145	140
MIX.2000	356	450	336	224	312	188	210	182	178




TURBINE MONOSTADIO FRONTALI

FRONTAL SINGLE - STAGE TURBINE

FORNIBILI SU RICHIESTA
AVAILABLE ON REQUEST

NOVITÀ
NEW



Articolo Art.	Descrizione Description
MF.422M	2200 W monofase monostadio frontale 2.2 Kw frontal single-stage single-phase
MF.422T	2200 W trifase monostadio frontale 2.2 Kw frontal single-stage three-phase
MF.430	3000 W trifase monostadio frontale 3 Kw frontal single-stage three-phase
MF.440	4000 W trifase monostadio frontale 4 Kw frontal single-stage three-phase
MF.422 IE2	2200 W trifase monostadio frontale con motore ad alta efficienza normativa IEC 60034-30 2.2 Kw frontal single-stage three-phase with high efficiency motor standards IEC 60034-30
MF.422 A	2200 W monofase monostadio frontale Atex 22 II 3 GD EEx nA II T4 / T 135 °C IP 65 2.2 Kw frontal single-stage single-phase Atex 22  II 3 GD EEx nA II T4 / T 135 °C IP 65
MF.430 A	2600 W trifase monostadio frontale Atex 22 II 3 GD EEx nA II T4 / T 135 °C IP 65 2.6 Kw frontal single-stage three-phase Atex 22  II 3 GD EEx nA II T4 / T 135 °C IP 65
MF.440 A	3400 W trifase monostadio frontale Atex 21 II 2 D EEx nA II T4 / T 135 °C IP 65 3.4 Kw frontal single-stage three-phase Atex 21  II 2 D EEx nA II T4 / T 135 °C IP 65

Su richiesta è possibile fornire le turbine con voltaggi speciali.

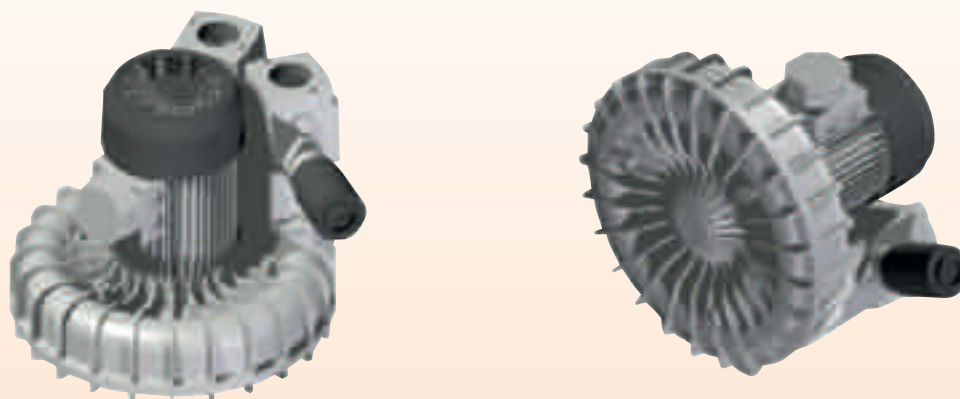
On request turbines can be supplied with special voltages.

TURBINE MONOSTADIO

SINGLE - STAGE TURBINE

FORNIBILI SU RICHIESTA
AVAILABLE ON REQUEST

NOVITÀ
NEW



Articolo Art.	Descrizione Description
TM.422M	2200 W monofase monostadio 2,2 Kw single-stage single-phase
TM.422T	2200 W trifase monostadio 2,2 Kw single-stage three-phase
TM.430	3000 W trifase monostadio 3 Kw single-stage three-phase
TM.440	4000 W trifase monostadio 4 Kw single-stage three-phase
TM.422 IE2	2200 W trifase monostadio frontale con motore ad alta efficienza normativa IEC 60034-30 2,2 Kw frontal single-stage three-phase with high efficiency motor standards IEC 60034-30
TM.422 A	2200 W monofase monostadio Atex 22 II 3 GD EEx nA II T4 / T 135 °C IP 65 2,2 Kw single-stage single-phase Atex 22 ⚠ II 3 GD EEx nA II T4 / T 135 °C IP 65
TM.430 A	2600 W trifase monostadio Atex 22 II 3 GD EEx nA II T4 / T 135 °C IP 65 2,6 Kw single-stage three-phase Atex 22 ⚠ II 3 GD EEx nA II T4 / T 135 °C IP 65
TM.440 A	3400 W trifase monostadio frontale Atex 21 II 2 D EEx nA II T4 / T 135 °C IP 65 3,4 Kw frontal single-stage three-phase Atex 21 ⚠ II 2 D EEx nA II T4 / T 135 °C IP 65

Su richiesta è possibile fornire le turbine con voltaggi speciali.
On request turbines can be supplied with special voltages.

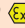
TURBINE BISTADIO PARALLELO FRONTALE

FRONTAL DOUBLE - STAGE TURBINE

FORNIBILI SU RICHIESTA
AVAILABLE ON REQUEST

NOVITÀ
NEW




Articolo Art.	Descrizione Description
BPF.440	4000 W trifase bistadio parallelo frontale 4 Kw parallel frontal double-stage three-phase
BPF.455	5500 W trifase bistadio parallelo frontale 5,5 Kw parallel frontal double-stage three-phase
BPF.440 IE2	4000 W trifase bistadio parallelo frontale con motore ad alta efficienza normativa IEC 60034-30 4 Kw parallel frontal double-stage three-phase with high efficiency motor standards IEC 60034-30
BPF.455 A	5500 W trifase bistadio parallelo frontale Atex 22 II 3 GD EEx nA II T4 / T 135 °C IP 65 5,5 Kw parallel frontal double-stage three-phase Atex 22  II 3 GD EEx nA II T4 / T 135 °C IP 65

TURBINE BISTADIO PARALLELO

PARALLEL DOUBLE - STAGE TURBINE

FORNIBILI SU RICHIESTA
AVAILABLE ON REQUEST



Articolo Art.	Descrizione Description
BP.440	4000 W trifase bistadio parallelo 4 Kw parallel double-stage three-phase
BP.455	5500 W trifase bistadio parallelo 5,5 Kw parallel double-stage three-phase
BP.440 IE2	4000 W trifase bistadio parallelo con motore ad alta efficienza normativa IEC 60034-30 4 Kw parallel double-stage three-phase with high efficiency motor standards IEC 60034-30
BP.455 A	5500 W trifase parallelo frontale Atex 22 II 3 GD EEx nA II T4 / T 135 °C IP 65 5,5 Kw parallel double-stage three-phase Atex 22  II 3 GD EEx nA II T4 / T 135 °C IP 65

TURBINE BISTADIO IN SERIE

SERIES DOUBLE - STAGE TURBINE

FORNIBILI SU RICHIESTA
AVAILABLE ON REQUEST



Articolo Art.	Descrizione Description
BS.440	4000 W trifase bistadio in serie 4 Kw series double-stage three-phase
BS.455	5500 W trifase bistadio in serie 5,5 Kw series double-stage three-phase
BS.440 IE2	4000 W trifase bistadio in serie con motore ad alta efficienza normativa IEC 60034-30 4 Kw series double-stage three-phase with high efficiency motor standards IEC 60034-30
BS.455 A	5500 W trifase bistadio in serie Atex 22 II 3 GD EEx nA II T4 / T 135 °C IP 65 5,5 Kw series double-stage three-phase Atex 22 II 3 GD EEx nA II T4 / T 135 °C IP 65

Su richiesta è possibile fornire le turbine con tensioni speciali.

On request turbines can be supplied with special voltages.

ACCESSORI OPTIONAL

TPS.403	Piastra supporto turbina Engine mounting plate
IMST	Impianto elettrico che comprende il magnetotermico, la scatola interruttore, 10 m di cavo Wiring including thermal circuit breaker, switch box and 10 meters cable
TMC	Manicotto per connessione tubi Ø 50 o Ø 60. Specificare il diametro. Hose connection sleeve Ø 50 or Ø 60. Diameter has to be specified.

NON TROVI IL RICAMBIO NECESSARIO?

DON'T YOU FIND THE NECESSARY SPARE PART?



INVIA UNA FOTO

PLEASE SEND A PICTURE



mail
magazzino@dellerba.com

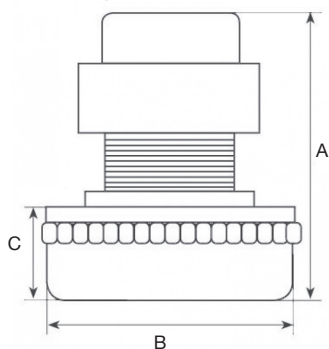


whatsapp
338-4297465



spedisci il campione a / *send the sample to*
Dell'Erba srl
via L. Galvani, 10
41015 Nonantola (MO)

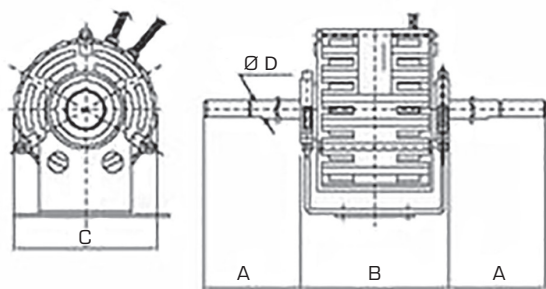
indicare i seguenti dati / *please indicate the following detail*



A
B
C

impiego / *use*

.....



A
B
C
Ø D

velocità / *speed*

poli / *poles*

watt / *watt*

A
B
C

Ø D

velocità / *speed*

poli / *poles*

.....

.....

